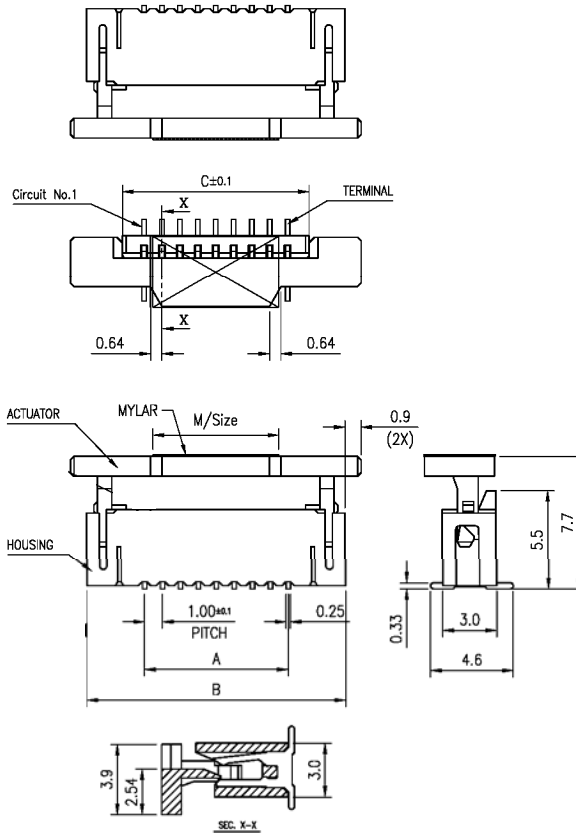
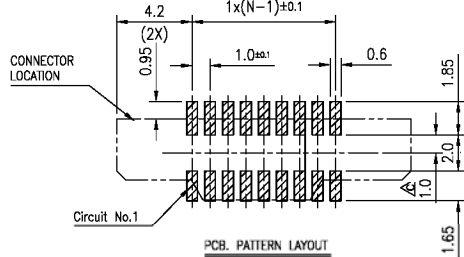


APPLICABLE FPC  
RECOMMENDED DIMENSION  
(THICKNESS:0.3±0.05)



Dimensions							
Item	Dim A	Dim B	Dim C	Item	Dim A	Dim B	Dim C
4	3.0	9.6	5.4	23	22.0	28.6	24.4
5	4.0	10.6	6.4	24	23.0	29.6	25.4
6	5.0	11.6	7.4	25	24.0	30.6	26.4
7	6.0	12.6	8.4	26	25.0	31.6	27.4
8	7.0	13.6	9.4	27	26.0	32.6	28.4
9	8.0	14.6	10.4	28	27.0	33.6	29.4
10	9.0	15.6	11.4	29	28.0	34.6	30.4
11	10.0	16.6	12.4	30	29.0	35.6	31.4
12	11.0	17.6	13.4	31	30.0	36.6	32.4
13	12.0	18.6	14.4	32	31.0	37.6	33.4
14	13.0	19.6	15.4	33	32.0	38.6	34.4
15	14.0	20.6	16.4	34	33.0	39.6	35.4
16	15.0	21.6	17.4	35	34.0	40.6	36.4
17	16.0	22.6	18.4	36	35.0	41.6	37.4
18	17.0	23.6	19.4	37	36.0	42.6	38.4
19	18.0	24.6	20.4	38	37.0	43.6	39.4
20	19.0	25.6	21.4	39	38.0	44.6	40.4
21	20.0	26.6	22.4	40	39.0	45.6	41.4
22	21.0	27.6	23.4				

**SPECIFICATIONS**

- Housing material: Nylon 9T, UL94V-0
- Actuator material: PPS, UL94V-0
- Terminal material: Copper alloy
- Terminal plating: Tin with gold flash or matt tin over all and gold flash on contact area

**RoHS compliant**

Series	Pitch	Type	Contacts	Style	Plating	Options
CFPC	100	85203	XX	VU	XX	XX
FPC connector	100=1.00mm 030=0.30mm 050=0.50mm 125=1.25mm	85203 type	04 to 40	R=Right angle V=Vertical U=Upper contacts B=Bottom contacts	TN=Tin over nickel GD1=Gold 1μ" over nickel GD3=Gold 3μ" over nickel	[blank]=None TR=Tape & reel pkg TB=Tube pkg

Rev.	Description	Date	Approved	Drawing	Name	Date
				Approved	Howard	12/05/06
				Checked	Lizzy	12/05/06
				Drawn	Tina	12/05/06
				0.0 ± 0.35	0.00 ± 0.20	Angles ± 3'
				UNIT: mm		

**Central Components Manufacturing**  
 440 Lincoln Blvd., Middlesex, New Jersey 08846  
 Phone 732 469-5720 888 288-5152 Fax 732 469-1919

Part No.: **CFPC-100-85203-XX-VU-XX-XX**

Description: FPC connector, 1.00mm pitch, vertical, upper contacts