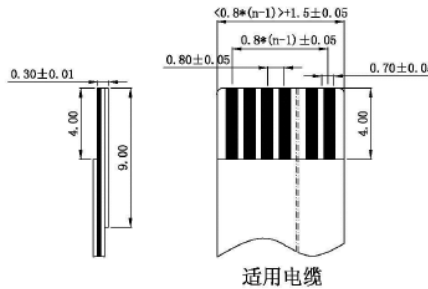
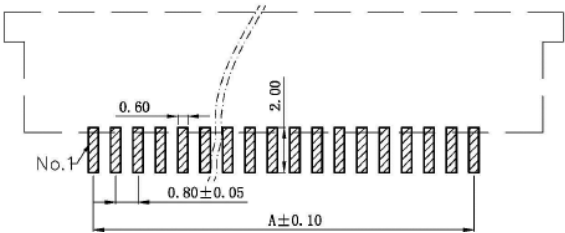
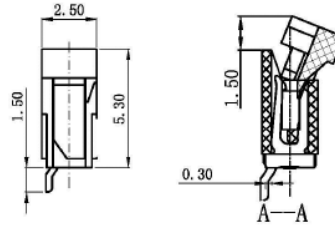
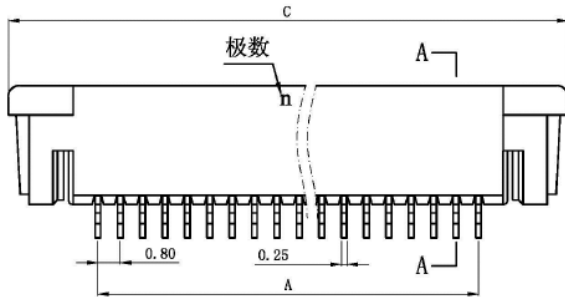
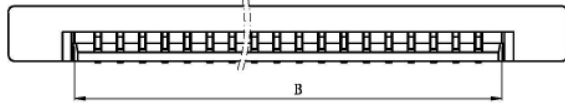


PITCH 0.8mm FPC CONNECTOR SMT TYPE

$A = 0.8 \times (P-1)$   
 $B = 0.8 \times (P+1)$   
 $C = 6.4 + 0.8 \times P$   
 $D = 7.1 + 0.8 \times P$

SPECIFICATIONS

Current Rating: 0.4A  
 Voltage Rating: 50V  
 Withstanding: 200V  
 Contact Resistance:  $\leq 20m\Omega$   
 Insulation Resistance: 500M $\Omega$   
 Plastic Material: LCP, UL94V-0  
 Lock Material: Tinned Phosphor Bronze  
 Plug Spring: Phosphor Bronze, Tin Gold  
 Operating Temp: -20C to +85C



Series	Pitch (mm)	Style	Positions	Type	Plating	Option
CFPC	080	SAZA	XX	XXX	XX	TXX
FPC/FFC connector (Flat Printed Circuit/ Flat Flex Cable) Zero insertion Force	0.8mm	SAZA (see diagram)	04-60	VX=Vertical RUX=Upper Contact R/A RBX=Bottom Contact R/A RDX=Dual Contact R/A X: S=SMT T=Thru Hole	TN=Tin GDG=Gold X=Flash if blank, 1, 3u"	TRX=Tape & Reel TBX=Tube X=Blank (None) C for Pick Cap

RoHS compliant

Rev.	Description	Date	Approved	Drawing	Name	Date
				Approved	Howard	09/28/11
				Checked	Lizzy	09/28/11
				Drawn	Tina	09/28/11
				0.0 ± 0.35	0.00 ± 0.20	Angles ± 3'
				UNIT: mm		


**Central Components Manufacturing**  
 440 Lincoln Blvd., Middlesex, New Jersey 08846  
 Phone 732 469-5720 888 288-5152 Fax 732 469-1919

Part No.: **CFPC-080-SAZA-XX-RBS-XX-TXX**

Description: FPC/FFC connector, 0.8mm pitch

