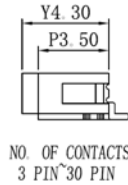
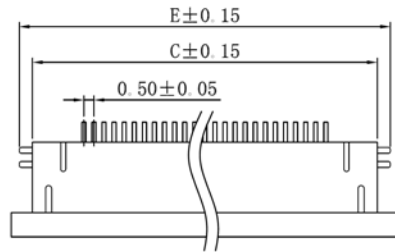
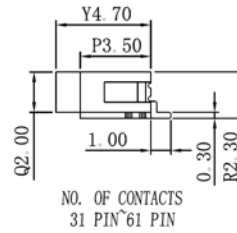
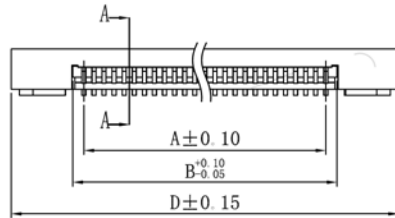


SECTION A-A



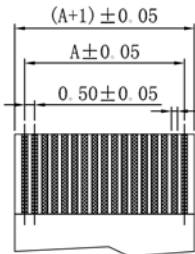
NO. OF CONTACTS
3 PIN³⁰ PIN



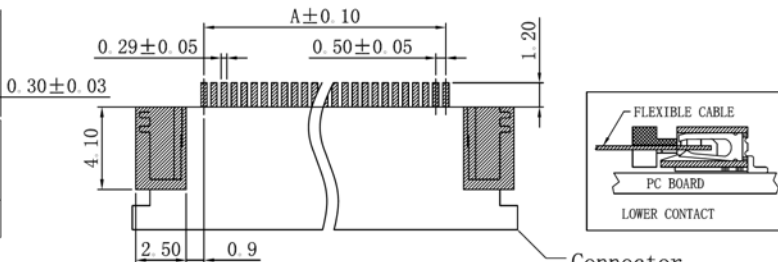
NO. OF CONTACTS
31 PIN⁶¹ PIN

SPECIFICATIONS

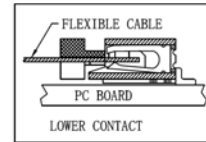
Operating Voltage: 100V AC Max.
 Current Rating: 0.5Amp Max.
 Contact Resistance: 30mΩ Max.
 Insulation Resistance: 500MΩ Min.
 Housing: PA66 UL94V-0
 Lock: PPS, UL94V-0
 Solder: Brass
 Terminal: Phosphor Bronze
 Plating: Tin/Gold Over Nickel
 Withstanding: 250V AC Min.
 Operating Temp: -20C to +85C



FFC/FPC DIMENSION
THICKNESS 0.30 mm



RECOMMENDED PCB LAYOUT



Connector

Series	Pitch	Type	Contacts	Style	Plating	Options
CFPC	050	AE3	XX	XX	TN	XX
FPC connector	050=0.50mm 030=0.30mm 100=1.00mm 125=1.25mm	AE3 Type	03-61	R=Right angle V=Vertical U=Upper contacts B=Bottom contacts	TN=Tin over nickel	[blank]=None TR=Tape & reel TB=Tube TY=Tray

RoHS compliant

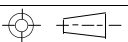
Rev.	Description	Date	Approved	Drawing	Name	Date
				Approved	Howard	05/14/01
				Checked	Lizzy	05/14/01
				Drawn	Tina	05/14/01
				0.0 ± 0.35	0.00 ± 0.20	Angles ± 3'
				UNIT: mm		


Central Components Manufacturing
 440 Lincoln Blvd., Middlesex, New Jersey 08846
 Phone 732 469-5720 888 288-5152 Fax 732 469-1919

Part No.: **CFPC-050-AE3-XX-RB-XX**

Description: 0.5mm FPC, SMT Right Angle, ZIF Bottom Contact

Dimensions																	
Pin	A	B	C	D	E	Pin	A	B	C	D	E	Pin	A	B	C	D	E
3	1.0	2.1	6.1	8.1	7.4	23	11.0	12.1	16.1	18.1	17.4	43	21.1	22.1	26.1	28.1	27.4
4	1.5	2.6	6.6	8.6	7.9	24	11.5	12.6	16.6	18.6	17.9	44	21.5	22.6	26.6	28.6	27.9
5	2.0	3.1	7.1	9.1	8.4	25	12.0	13.1	17.1	19.1	18.4	45	22.0	23.1	27.1	29.1	28.4
6	2.5	3.6	7.6	9.6	8.9	26	12.5	13.6	17.6	19.6	18.9	46	22.5	23.6	27.6	29.6	28.9
7	3.0	4.1	8.1	10.1	9.4	27	13.0	14.1	18.1	20.1	19.4	47	23.0	24.1	28.1	30.1	29.4
8	3.5	4.6	8.6	10.6	9.9	28	13.5	14.6	18.6	20.6	19.9	48	23.5	24.6	28.6	30.6	29.9
9	4.0	5.1	9.1	11.1	10.4	29	14.0	15.1	19.1	21.1	20.4	49	24.0	25.1	29.1	31.1	30.4
10	4.5	5.6	9.6	11.6	10.9	30	14.5	15.6	19.6	21.6	20.9	50	24.5	25.6	29.6	31.6	30.9
11	5.0	6.1	10.1	12.1	11.4	31	15.0	16.1	20.1	22.1	21.4	51	25.0	26.1	30.1	32.1	31.4
12	5.5	6.6	10.6	12.6	11.9	32	15.5	16.6	20.6	22.6	21.9	52	25.5	26.6	30.6	32.6	31.9
13	6.0	7.1	11.1	13.1	12.4	33	16.0	17.1	21.1	23.1	22.4	53	26.0	27.1	31.1	33.1	32.4
14	6.5	7.6	11.6	13.6	12.9	34	16.5	17.6	21.6	23.6	22.9	54	26.5	27.6	31.6	33.6	32.9
15	7.0	8.1	12.1	14.1	13.4	35	17.0	18.1	22.1	24.1	23.4	55	27.0	28.1	32.1	34.1	33.4
16	7.5	8.6	12.6	14.6	13.9	36	17.5	18.6	22.6	24.6	23.9	56	27.5	28.6	32.6	34.6	33.9
17	8.0	9.1	13.1	15.1	14.4	37	18.0	19.1	23.1	25.1	24.4	57	28.0	29.1	33.1	35.1	34.4
18	8.5	9.6	13.6	15.6	14.9	38	18.5	19.6	23.6	25.6	24.9	58	28.5	29.6	33.6	35.6	34.9
19	9.0	10.1	14.1	16.1	15.4	39	19.0	20.1	24.1	26.1	25.4	59	29.0	30.1	34.1	36.1	35.4
20	9.5	10.6	14.6	16.6	15.9	40	19.5	20.6	24.6	26.6	25.9	60	29.5	30.6	34.6	36.6	35.9
21	10.0	11.1	15.1	17.1	16.4	41	20.0	21.1	25.1	27.1	26.4	61	30.0	31.1	35.1	37.1	36.4
22	10.5	11.6	15.6	17.6	16.9	42	20.5	21.6	25.6	27.6	26.9						

Rev.	Description	Date	Approved	Drawing	Name	Date
				Approved	Howard	05/14/01
				Checked	Lizzy	05/14/01
				Drawn	Tina	05/14/01
				0.0 ± 0.35	0.00 ± 0.20	Angles ± 3'
					UNIT: mm	



Central Components Manufacturing
440 Lincoln Blvd., Middlesex, New Jersey 08846
Phone 732 469-5720 888 288-5152 Fax 732 469-1919

Part No.: **CFPC-050-AE3-XX-RB-XX**

Description: 0.5mm FPC, SMT Right Angle, ZIF Bottom Contact