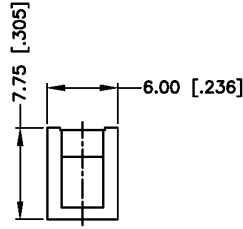
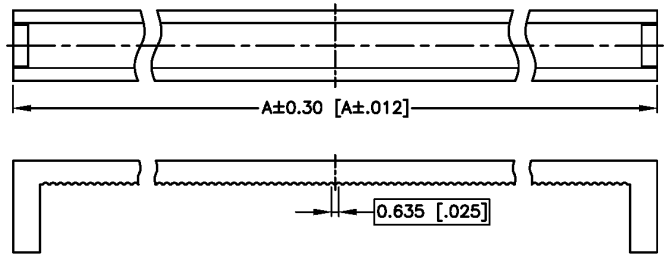
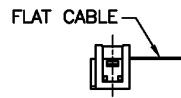
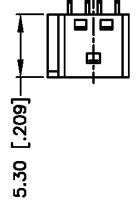
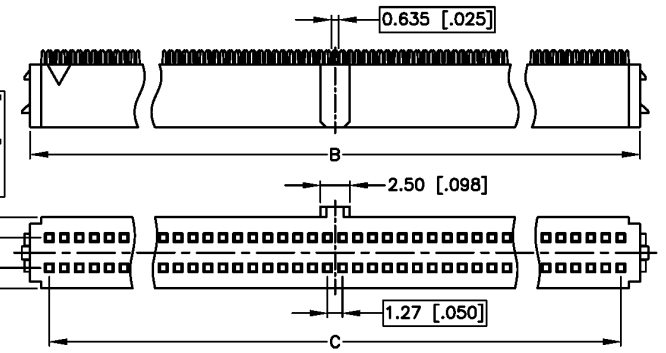


**SPECIFICATIONS**

Current Rating: 1 AMP max  
 Terminal Material: Copper Alloy, Gold over Nickel Plating  
 Contact Resistance: 30m Ohms Max.  
 Housing Material: PBT UL94V-0, Black  
 Insulation Resistance: 500M Ohms Min. @ 500V DC  
 Withstanding: 500V AC RMS for 1 minute  
 Operating Temp: -40°C to +85°C



Dimensions			
Pos	A	B	C
10	11.25	8.35	5.08
14	13.79	10.89	7.62
16	15.06	12.16	8.89
20	17.60	14.70	11.43
22	18.87	15.97	12.70
26	21.41	18.51	15.24
30	23.95	21.05	17.78
34	26.49	23.59	20.32
40	30.30	27.40	24.13
44	32.84	29.94	26.67
50	36.65	33.75	30.48
60	43.00	40.10	36.83
68	48.08	45.18	41.91
80	55.70	52.80	49.53
100	68.40	65.50	62.23



Series	Positions	Polarized	Finish
CFC	XX	P	SG
.050"x.100" (1.27 mmx2.54mm)	10-100 See Chart	P=Polarized	Selective Gold

RoHS compliant

Rev.	Description	Date	Approved	Drawing	Name	Date
				Approved	Howard	03/24/05
				Checked	Lizzy	03/24/05
				Drawn	Tina	03/24/05
				0.0 ± 0.35	0.00 ± 0.20	Angles ± 3'
				UNIT: mm		

**Central Components Manufacturing**  
 440 Lincoln Blvd., Middlesex, New Jersey 08846  
 Phone 732 469-5720 888 288-5152 Fax 732 469-1919

Part No.: **CFC-XX-P-SG**

Description: IDC Socket

