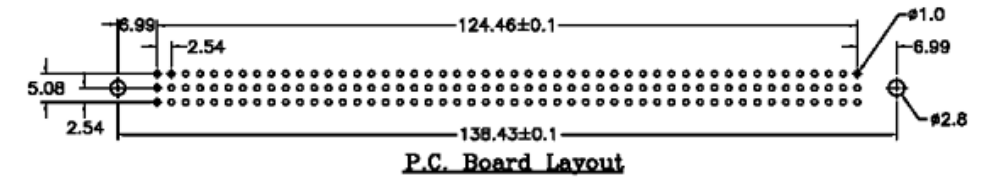
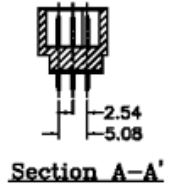
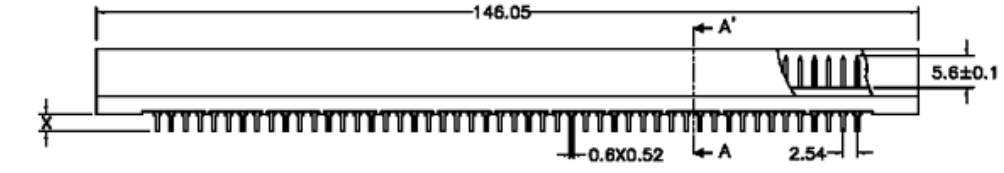


**SPECIFICATIONS**

Current rating: 2 amps  
 Contact material: Brass  
 Contact plating: Gold  
 Housing material: High temp., UL94V-0  
 (Withstands IR and VPR soldering)  
 Contact resistance: 30 milliohms max. at 100mA DC  
 Insulation resistance: 1,000 megohms min. at 500VDC  
 Withstanding: 1,000VAC for 1 min.  
 Operating temperature: -65°C to 125°C



Series	Gender	Mounting	Contacts	Pin Length	Pitch	Loaded Rows	Plating	Options
CED	1	A	150	XX	B1	X	SGX	XX
DIN41612	1=Male	A=Straight	150 contacts	A1=4.0mm A2=2.5mm	B1=2.54mm	1=A 2=B 4=A & B 5=A & C 7=A, B & C	Selective gold SG1=30µ" (Level 1) SG2=15µ" (Level 2) SG3=10µ" (Basic)	[blank]=None BL=Board lock HT=High temp.

RoHS compliant

Rev.	Description	Date	Approved	Drawing	Name	Date
				Approved	Howard	07/26/06
				Checked	Lizzy	07/26/06
				Drawn	Tina	07/26/06
				0.0 ± 0.35	0.00 ± 0.20	Angles ± 3'
				UNIT: mm		

**Central Components Manufacturing**  
 440 Lincoln Blvd., Middlesex, New Jersey 08846  
 Phone 732 469-5720 888 288-5152 Fax 732 469-1919

Part No.: **CED-1-A-150-XX-B1-7-SGX-HT**

Description: DIN 41612 connector, male, vertical mount, 150 pins