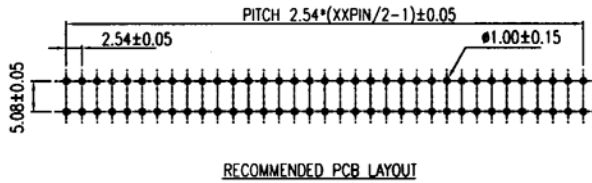


SPECIFICATIONS

Current rating: 3 amps
 Contact material: Phosphor bronze or brass
 Contact resistance: 20 milliohms max.
 Contact plating: Gold over nickel
 Insulator material: PBT with glass fiber, UL94V-0
 Insulation resistance: 5,000 megohms min. at 500 VDC
 Withstanding: 1,000 VAC/1 min.
 Insertion force: 340g max. per pair
 Withdrawal force: 28g min. per pair
 Operating temperature: -55°C to +105°C

Circuits	A	B	C	D
6	5.08	10.16	14.22	11.62
8	7.62	12.70	16.76	14.16
10	10.16	15.24	19.30	16.70
12	12.70	17.78	21.84	19.24
14	15.24	20.32	24.38	21.78
16	17.78	22.86	26.92	24.32
18	20.32	25.40	29.46	26.86
20	22.86	27.94	32.00	29.40
22	25.40	30.48	34.54	31.94
24	27.94	33.02	37.08	34.48
26	30.48	35.56	39.62	37.02
28	33.02	38.10	42.16	39.56
30	35.56	40.64	44.70	42.10
32	38.10	43.18	47.24	44.64
34	40.64	45.72	49.78	47.18
36	43.18	48.26	52.32	49.72
38	45.72	50.80	54.86	52.26
40	48.26	53.34	57.40	54.80
42	50.80	55.88	59.94	57.34
44	53.34	58.42	62.48	59.88
46	55.88	60.96	65.02	62.42

Circuits	A	B	C	D
48	58.42	63.50	67.56	64.96
50	60.96	66.04	70.10	67.50
52	63.50	68.58	72.64	70.04
54	66.04	71.12	75.18	72.58
56	68.58	73.66	77.72	75.12
58	71.12	76.20	80.26	77.66
60	73.66	78.74	82.80	80.20
62	76.20	81.28	85.34	82.74
64	78.74	83.82	87.88	85.28
66	81.28	86.36	90.42	87.82
68	83.82	88.90	92.96	90.36
70	86.36	91.44	95.50	92.90
72	88.90	93.98	98.04	95.44
80	99.06	104.14	108.20	105.60
86	106.68	111.76	115.82	113.22
92	114.30	119.38	123.44	120.84
98	129.54	134.62	138.68	136.08
100	124.46	129.54	133.60	131.00
104	129.54	134.62	138.68	136.08
110	137.16	142.24	146.30	143.70
120	149.66	154.94	159.00	156.40



RoHS compliant

Rev.	Description	Date	Approved	Drawing	Name	Date
				Approved	Howard	08/10/99
				Checked	Lizzy	08/10/99
				Drawn	Tina	08/10/99
				0.0 ± 0.35	0.00 ± 0.20	Angles ± 3'
				UNIT: mm		

Central Components Manufacturing
 440 Lincoln Blvd., Middlesex, New Jersey 08846
 Phone 732 469-5720 888 288-5152 Fax 732 469-1919

Part No.: **CECC-XXXD-SG30**

Description: Card edge connector, .100" pitch, dual position