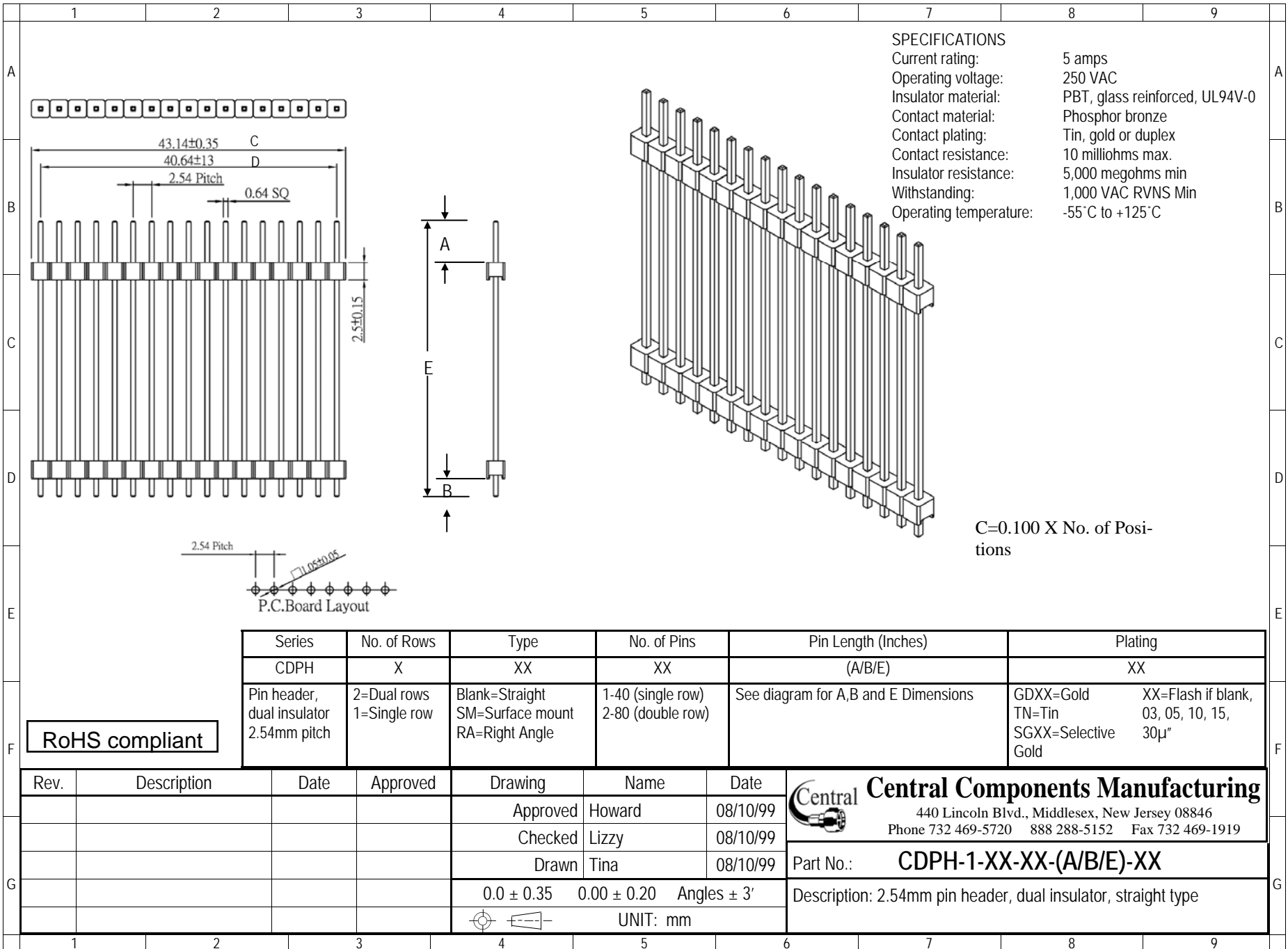


SPECIFICATIONS

Current rating:	5 amps
Operating voltage:	250 VAC
Insulator material:	PBT, glass reinforced, UL94V-0
Contact material:	Phosphor bronze
Contact plating:	Tin, gold or duplex
Contact resistance:	10 milliohms max.
Insulator resistance:	5,000 megohms min
Withstanding:	1,000 VAC RVNS Min
Operating temperature:	-55°C to +125°C

C=0.100 X No. of Positions



Series	No. of Rows	Type	No. of Pins	Pin Length (Inches)	Plating
CDPH	X	XX	XX	(A/B/E)	XX
Pin header, dual insulator 2.54mm pitch	2=Dual rows 1=Single row	Blank=Straight SM=Surface mount RA=Right Angle	1-40 (single row) 2-80 (double row)	See diagram for A,B and E Dimensions	GDXX=Gold XX=Flash if blank, TN=Tin 03, 05, 10, 15, SGXX=Selective 30μ" Gold

RoHS compliant

Rev.	Description	Date	Approved	Drawing	Name	Date
				Approved	Howard	08/10/99
				Checked	Lizzy	08/10/99
				Drawn	Tina	08/10/99
				0.0 ± 0.35	0.00 ± 0.20	Angles ± 3'
					UNIT: mm	

Central Components Manufacturing
 440 Lincoln Blvd., Middlesex, New Jersey 08846
 Phone 732 469-5720 888 288-5152 Fax 732 469-1919

Part No.: **CDPH-1-XX-XX-(A/B/E)-XX**

Description: 2.54mm pin header, dual insulator, straight type