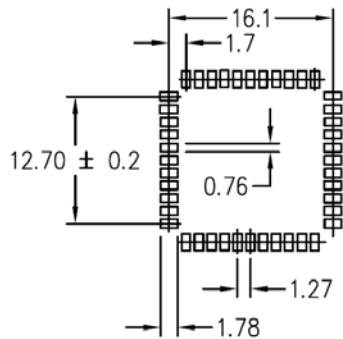
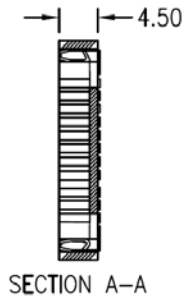


SPECIFICATIONS

Insulator Material: PPS&40% Glass Fiber UL94V-0
 Contact Resistance: 30m Ohm Max at DC 100mA
 Current Rating: 1 Amp
 Withstanding: AC 500V for 1 minute
 Contact Material: Phosphor Bronze
 Temperature Range: -55C to +105C



P.C.B LAYOUT



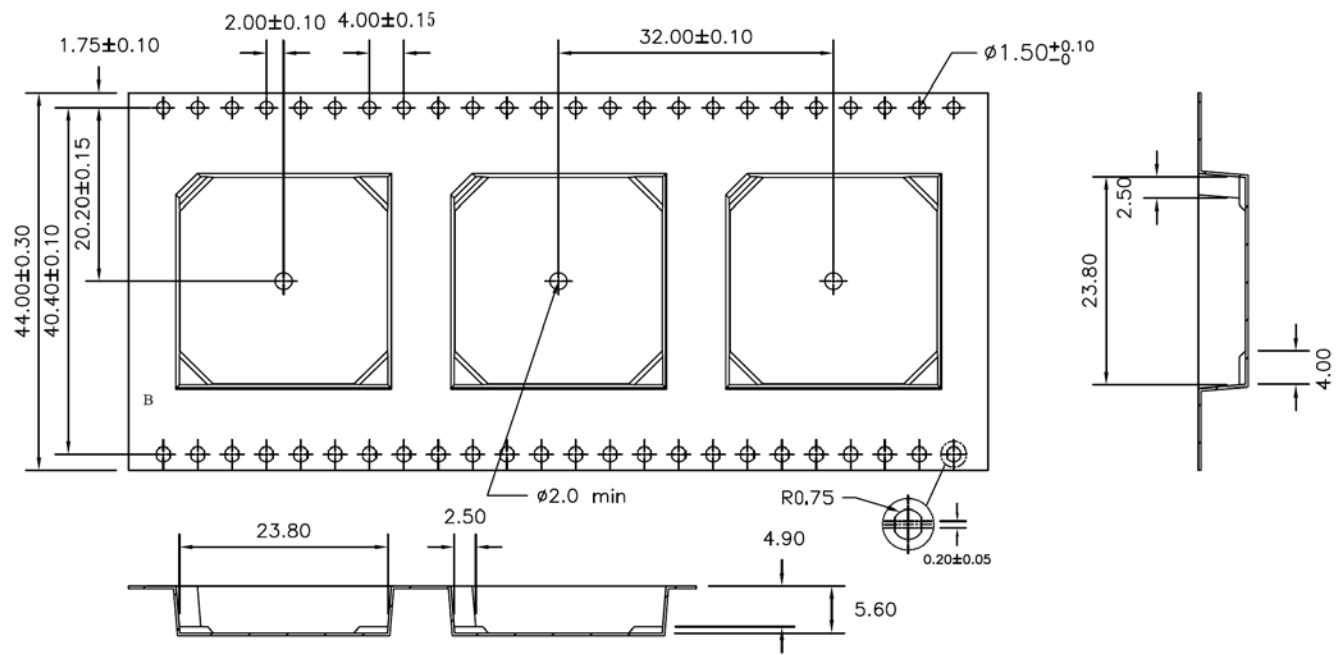
RoHS compliant

Rev.	Description	Date	Approved	Drawing	Name	Date
				Approved	Howard	09/14/14
				Checked	Lizzy	09/14/14
				Drawn	Tina	09/14/14
				0.0 ± 0.35	0.00 ± 0.20	Angles ± 3'
						UNIT: mm

Central Components Manufacturing
 440 Lincoln Blvd., Middlesex, New Jersey 08846
 Phone 732 469-5720 888 288-5152 Fax 732 469-1919


Part No.: **CCSM-44-TN-TR**

Description: PLCC SMT PPS 44Pin Tin



1. 10 sprocket hole pitch cumulative tolerance ±0.20
2. Carrier camber is within 1 mm in 250mm
3. Material: Black conductive polystyrene alloy UP-5000
4. All dimensions meet EIA-481-B requirements
5. Thickness: 0.30±0.05mm
6. Packing length per 22" reel :36.0 Meters
7. Components load per 13" reel: 350pcs

Rev.	Description	Date	Approved	Drawing	Name	Date
				Approved	Howard	09/14/14
				Checked	Lizzy	09/14/14
				Drawn	Tina	09/14/14
				0.0 ± 0.35	0.00 ± 0.20	Angles ± 3'
				UNIT: mm		



Central Components Manufacturing
440 Lincoln Blvd., Middlesex, New Jersey 08846
Phone 732 469-5720 888 288-5152 Fax 732 469-1919

Part No.: **CCSM-44-TN-TR**

Description: PLCC SMT PPS 44Pin Tin

	1	2	3	4	5	6	7	8	9	
A										A
B										B
C										C
D										D
E										E
F										F
G										G
	1	2	3	4	5	6	7	8	9	