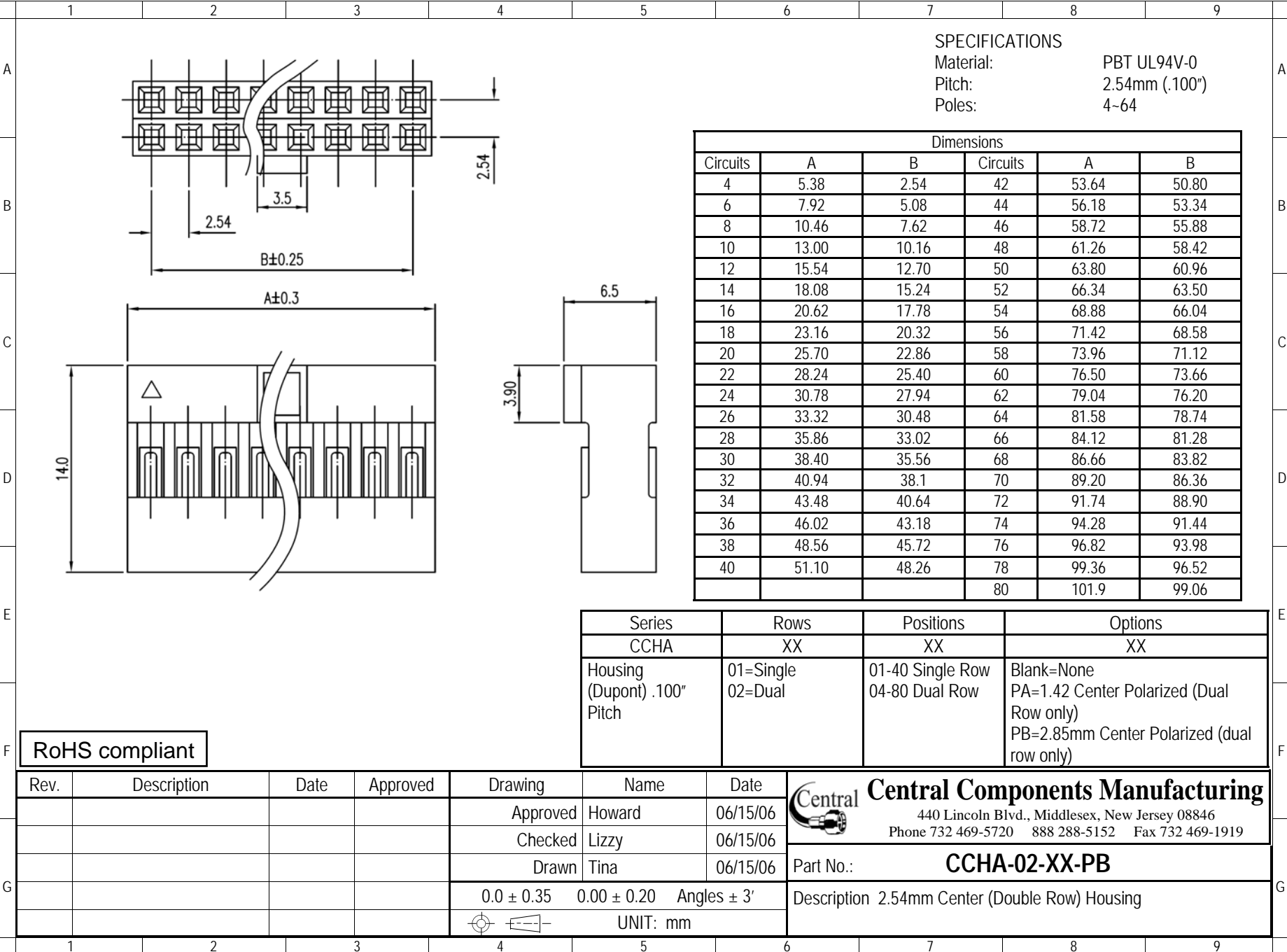


SPECIFICATIONS

Material: PBT UL94V-0
 Pitch: 2.54mm (.100")
 Poles: 4-64



Dimensions					
Circuits	A	B	Circuits	A	B
4	5.38	2.54	42	53.64	50.80
6	7.92	5.08	44	56.18	53.34
8	10.46	7.62	46	58.72	55.88
10	13.00	10.16	48	61.26	58.42
12	15.54	12.70	50	63.80	60.96
14	18.08	15.24	52	66.34	63.50
16	20.62	17.78	54	68.88	66.04
18	23.16	20.32	56	71.42	68.58
20	25.70	22.86	58	73.96	71.12
22	28.24	25.40	60	76.50	73.66
24	30.78	27.94	62	79.04	76.20
26	33.32	30.48	64	81.58	78.74
28	35.86	33.02	66	84.12	81.28
30	38.40	35.56	68	86.66	83.82
32	40.94	38.1	70	89.20	86.36
34	43.48	40.64	72	91.74	88.90
36	46.02	43.18	74	94.28	91.44
38	48.56	45.72	76	96.82	93.98
40	51.10	48.26	78	99.36	96.52
			80	101.9	99.06

Series	Rows	Positions	Options
CCHA	XX	XX	XX
Housing (Dupont) .100" Pitch	01=Single 02=Dual	01-40 Single Row 04-80 Dual Row	Blank=None PA=1.42 Center Polarized (Dual Row only) PB=2.85mm Center Polarized (dual row only)

RoHS compliant

Rev.	Description	Date	Approved	Drawing	Name	Date
				Approved	Howard	06/15/06
				Checked	Lizzy	06/15/06
				Drawn	Tina	06/15/06
				0.0 ± 0.35	0.00 ± 0.20	Angles ± 3'
				UNIT: mm		

Central Components Manufacturing
 440 Lincoln Blvd., Middlesex, New Jersey 08846
 Phone 732 469-5720 888 288-5152 Fax 732 469-1919

Part No.: **CCHA-02-XX-PB**

Description 2.54mm Center (Double Row) Housing