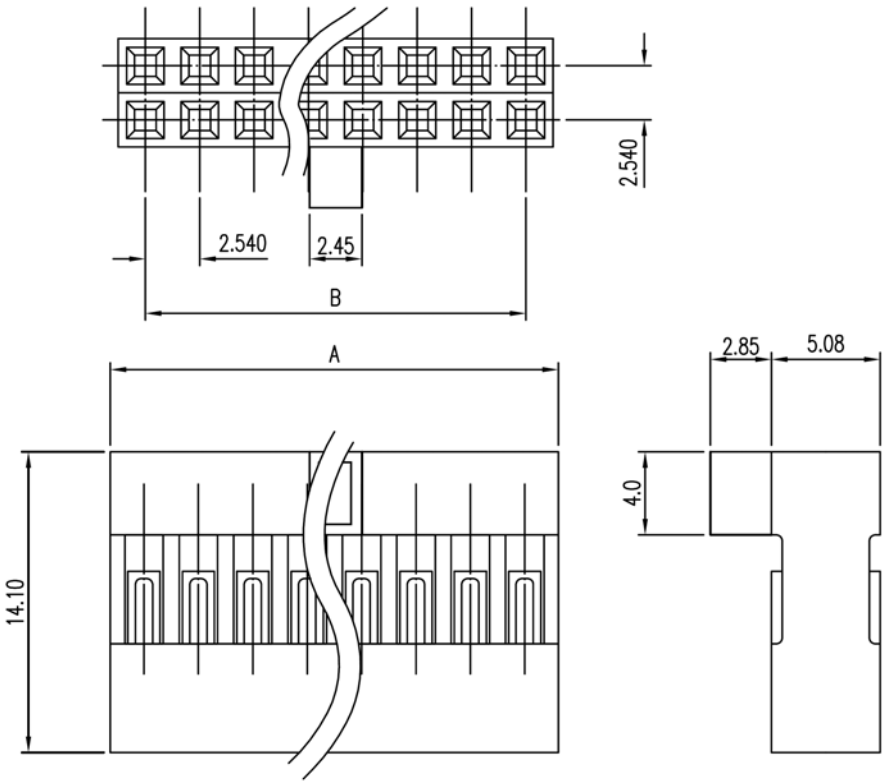


SPECIFICATIONS

Material: PBT UL94V-0
 Pitch: 2.54mm (.100")
 Poles: 4-64



Dimensions					
Circuits	A	B	Circuits	A	B
4	5.20	2.54	34	43.18	40.64
6	7.62	5.08	36	45.72	43.18
8	10.16	7.62	38	48.26	45.72
10	12.70	10.16	40	50.80	48.26
12	15.24	12.70	42	53.34	50.80
14	17.78	15.24	44	55.88	53.34
16	20.32	17.78	46	58.42	55.88
18	22.86	20.32	48	60.96	58.42
20	25.40	22.86	50	63.50	60.96
22	27.94	25.40	52	66.04	63.50
24	30.48	27.94	54	68.58	66.04
26	33.02	30.48	56	71.12	68.58
28	35.56	33.02	58	73.66	71.12
30	38.10	35.56	60	76.20	73.66
32	40.64	38.10	62	78.74	76.20
			64	81.28	78.74

Series	Rows	Positions	Options
CCHA	XX	XX	XX
Housing (Dupont) .100" Pitch	01=Single 02=Dual	01-40 Single Row 04-80 Dual Row	Blank=None PA=1.42 Center Polarized (Dual Row only) PB=2.85mm Center Polarized (dual row only)

RoHS compliant

Rev.	Description	Date	Approved	Drawing	Name	Date
				Approved	Howard	06/15/06
				Checked	Lizzy	06/15/06
				Drawn	Tina	06/15/06
				0.0 ± 0.35	0.00 ± 0.20	Angles ± 3'
				UNIT: mm		

Central Components Manufacturing
 440 Lincoln Blvd., Middlesex, New Jersey 08846
 Phone 732 469-5720 888 288-5152 Fax 732 469-1919

Part No.: **CCHA-02-XX-PA**

Description 2.54mm Center (Double Row) Housing

A
B
C
D
E
F
G

A
B
C
D
E
F
G

1 2 3 4 5 6 7 8 9