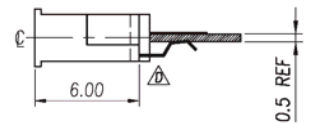
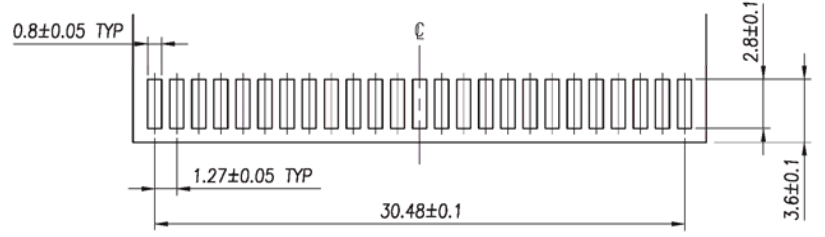
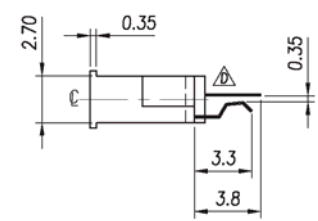
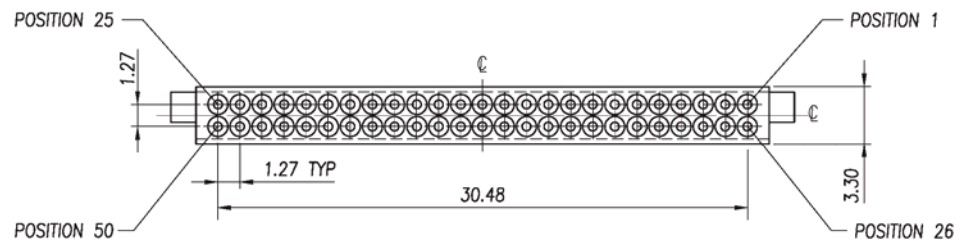


SPECIFICATIONS
 Contact material: Copper alloy
 Contact plating: Gold (flash, 5, 10, 15, 30, 50 μ)
 with tin tail
 Housing material: LCP glass filled



PC BOARD LOCATION

Series	Type	Positions	Plating
CCF	60225	X50	SGXX
Compact Flash	Center Straddle With 0.4 Offset	50=50 Positions X:0=0 Standoff 6=1.1mm Standoff	SG=Selective Gold XX=Flash if blank 5,10,15,30 μ

RoHS compliant

Rev.	Description	Date	Approved	Drawing	Name	Date
				Approved	Howard	12/13/07
				Checked	Lizzy	12/13/07
				Drawn	Tina	12/13/07
				0.0 ± 0.35	0.00 ± 0.20	Angles ± 3'
				UNIT: mm		

Central Components Manufacturing
 440 Lincoln Blvd., Middlesex, New Jersey 08846
 Phone 732 469-5720 888 288-5152 Fax 732 469-1919

Part No.: **CCF-60225-X50-SGXX**

Description: PCMCIA SMT, 50 position dual row

