

**SPECIFICATIONS**

Current Rating: 0.5A  
 Voltage Rating: 100VAC  
 Contact Material: Copper  
 Contact Resistance: 40m Ohm max.  
 Housing Material: Plastic, UL94V-0  
 Insulation Resistance: 1000M Ohm min.  
 Withstanding: 500VAC/ 1min  
 Operating Temp: -40°C ~ 85°C

Series	Type	Position	Finish	Options
CCF	35TW1	50	GD15	XX
Compact Flash	Type 2, 2mm Stand Off, White	50 Positions	15u" Gold	Blank=Tray TR=Tape & Reel

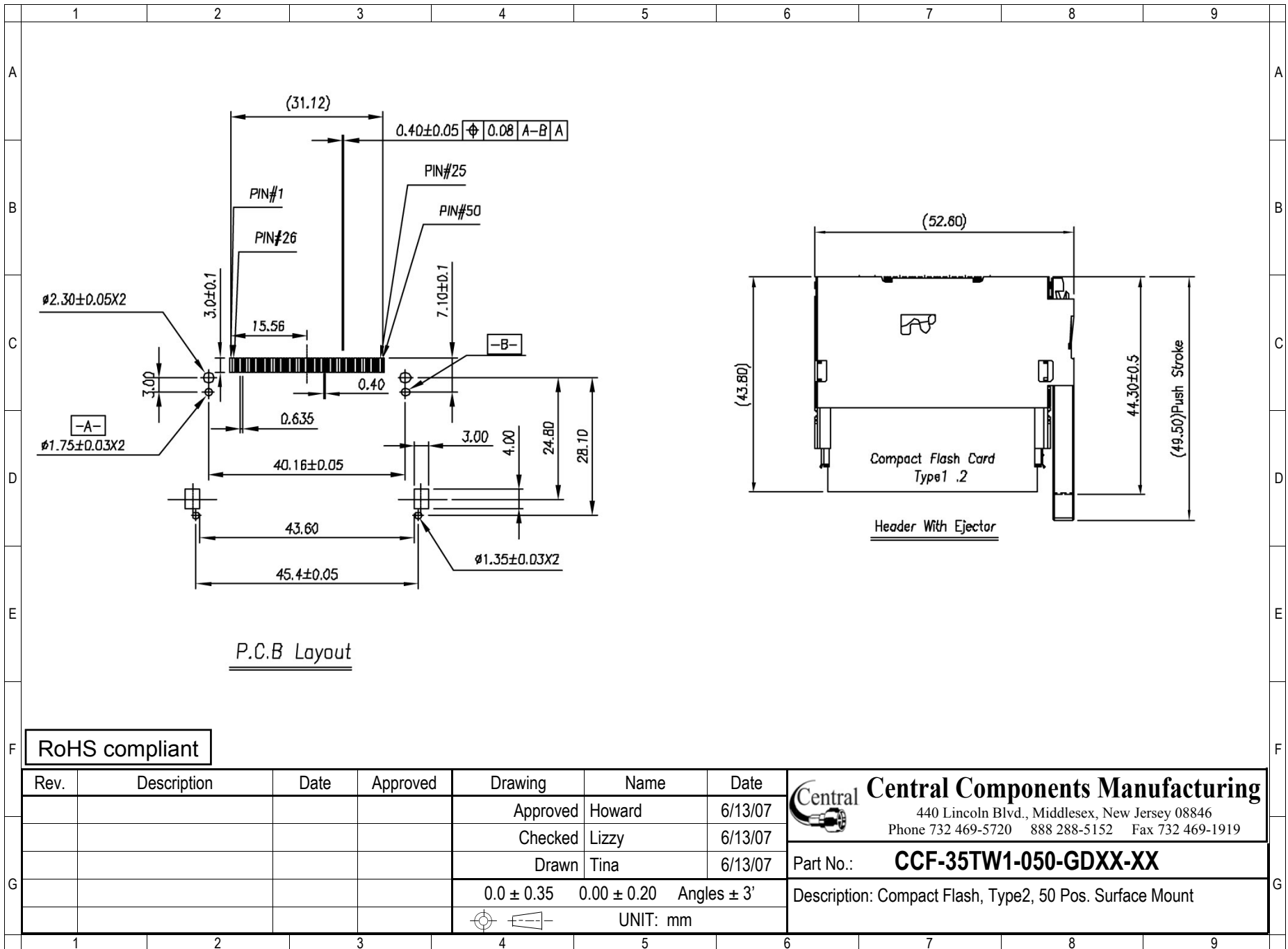
RoHS compliant

Rev.	Description	Date	Approved	Drawing	Name	Date
				Approved	Howard	6/13/07
				Checked	Lizzy	6/13/07
				Drawn	Tina	6/13/07
				0.0 ± 0.35	0.00 ± 0.20	Angles ± 3'
				UNIT: mm		

**Central Components Manufacturing**  
 440 Lincoln Blvd., Middlesex, New Jersey 08846  
 Phone 732 469-5720 888 288-5152 Fax 732 469-1919

Part No.: **CCF-35TW1-050-GDXX-XX**

Description: Compact Flash, Type2, 50 Pos. Surface Mount



Rev.	Description	Date	Approved	Drawing	Name	Date
				Approved	Howard	6/13/07
				Checked	Lizzy	6/13/07
				Drawn	Tina	6/13/07
				0.0 ± 0.35	0.00 ± 0.20	Angles ± 3'
				UNIT: mm		

**Central Components Manufacturing**  
 440 Lincoln Blvd., Middlesex, New Jersey 08846  
 Phone 732 469-5720 888 288-5152 Fax 732 469-1919

Part No.: **CCF-35TW1-050-GDXX-XX**

Description: Compact Flash, Type2, 50 Pos. Surface Mount