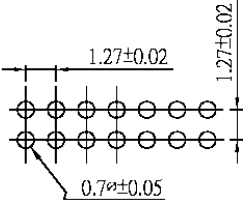


$$F = 1.27 * (\text{NO of Positions} - 1) \pm 0.15$$

$$G = F + 1.27 \pm 0.35$$

E=Overall pin length

**SPECIFICATIONS**  
 Contact material: Brass  
 Contact plating: Gold flash over nickel  
 Insulator material: Nylon 6T



P.C.Board Layout

RoHS compliant

Series	No. of Rows	Type	No. of Pins	Pin Length	Plating
CD3PH	X	XX	XX	(A/B/E)	XX
Pin header, DIP type, .40mm square pins	2=Dual rows 1=Single row	Blank=Straight RA=Right angle SM=Surface mount	1-40 (single row) 2-80 (double row)	Customer specified pin length. See diagram for A, B and E dimensions	SGXX=Duplex TN=Tin GDXX=Gold XX=Flash if blank, 03, 05, 10, 15, 30μ"

Rev.	Description	Date	Approved	Drawing	Name	Date
				Approved	Howard	08/10/99
				Checked	Lizzy	08/10/99
				Drawn	Tina	08/10/99
				0.0 ± 0.35	0.00 ± 0.20	Angles ± 3'

**Central Components Manufacturing**  
 440 Lincoln Blvd., Middlesex, New Jersey 08846  
 Phone 732 469-5720 888 288-5152 Fax 732 469-1919

Part No.: **CD3PH-2-XX-XX-(A/B/E)-XX**

Description: Pin header, 1.27x1.27, dual insulator, double row

