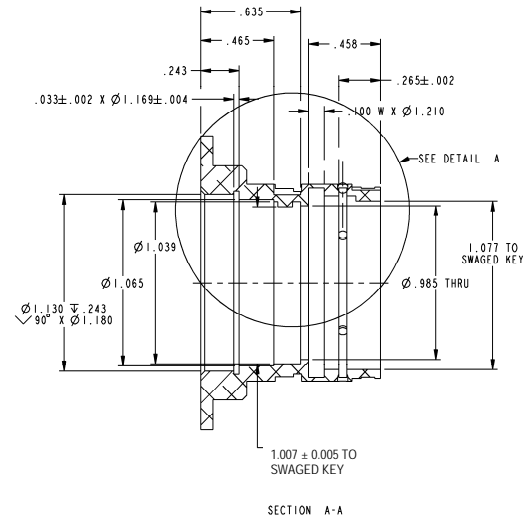
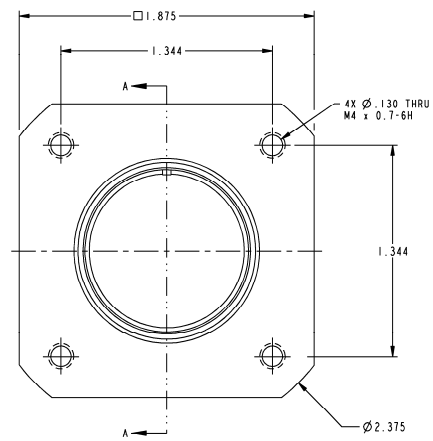
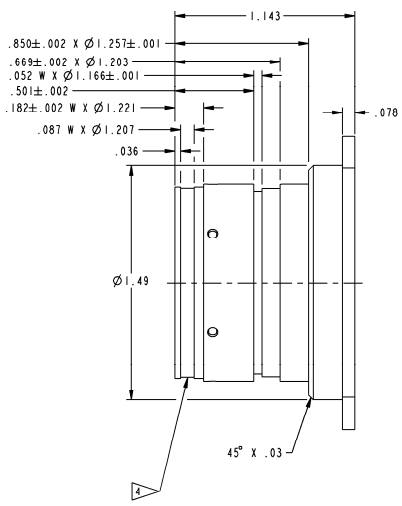


- 1 PURCHASED PART
- 2 MATERIAL. ALUMINUM 6061-T6
- 3 FINISH: ELECTROLESS NICKEL PLATE MUST COMPLY WITH ASM2404 AND ASTM B733 BUILD UP OF .001" TO .0014"
- 4 PAINT CHANNEL RED

DETAIL A
SCALE 4:1



SECTION A-A

RoHS compliant

UNLESS OTHERWISE SPECIFIED: TWO PLACE DECIMALS ± .01, THREE PLACE DECIMALS ± .005, FOUR PLACE DECIMALS ± .0005
 MACHINE SURFACES GEOMETRIC SYMBOLS PER ANSI Y14.5, MACHINE FILLETS .015 MAX, BREAK SHARP EDGES .015 MAX
 ANGULAR SURFACES TO BE TRUE WITHIN ± 1°, FEATURES ON COMMON C/ TO BE CONCENTRIC WITHIN .010 TOTAL

Rev.	Description	Date	Approved	Drawing	Name	Date	Central Components Manufacturing 440 Lincoln Blvd., Middlesex, New Jersey 08846 Phone 732 469-5720 888 288-5152 Fax 732 469-1919
				Approved	Howard	01/22/08	
				Checked	Lizzy	01/22/08	
				Drawn	Tina	01/22/08	
				0.00 ± 0.01 0.000 ± .005 Angles ± 1°			Part No.: CCC-544075-1-10
				UNIT: mm			Description: Connector Body