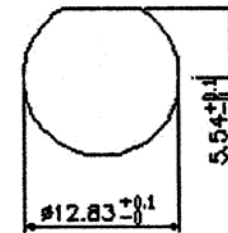
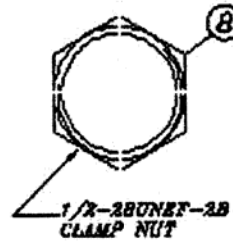
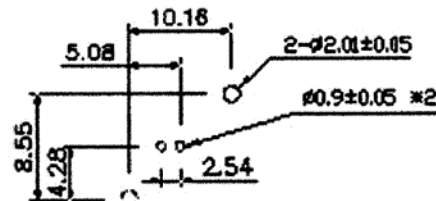


LOCK WASHER



| Item | Name | Material | Plating |
|------|----------------|-----------------|---------|
| 1 | Center contact | Phosphor bronze | Gold |
| 2 | Body | Zinc alloy | Nickel |
| 3 | Housing | PBT, UL94V-0 | |
| 4 | Insulator | PE-606 | |
| 5 | Mounting post | Brass | Tin |
| 6 | Solder tail | Brass wire | Tin |
| 7 | Washer | Phosphor bronze | Nickel |
| 8 | Nut | Brass | Nickel |



- Recommended mounting hole maximum panel thickness: 5.5mm
- Recommended mounting torque: 12 inch-pounds max.

Color note:

- Metal body only available in black
- Dual color options only available for dual port connectors

RoHS compliant

| Series | Profile | Mounting Type | Body Style | Shell Material | Color (see note) | Options |
|---------------|-----------------|---|--------------------------------------|--------------------------------|--|---|
| CBN | X | XX | X | X | XX | XX |
| BNC connector | H=High L=Low | VM=Vertical mount RM=Right-angle mount | A=#4-40 threaded sleeve B=Bayonet | M=Metal body P=Plastic body | BK=Black RD=Red WT=White RW=Red/White GN=Green RY=Red/Yellow YL=Yellow BG=Blue/Green BL=Blue | [blank]=50 ohm (standard) CP=Capacitor type DP=Dual port, R/A mount 75=75 ohm HW=Hardware & nut 30GD=30µ" gold plate BL=Board locks |

| Rev. | Description | Date | Approved | Drawing | Name | Date |
|------|-------------|------|----------|------------|-------------|-------------|
| | | | | Approved | Howard | 08/10/99 |
| | | | | Checked | Lizzy | 08/10/99 |
| | | | | Drawn | Tina | 08/10/99 |
| | | | | 0.0 ± 0.35 | 0.00 ± 0.20 | Angles ± 3' |
| | | | | UNIT: mm | | |

Central Components Manufacturing
 440 Lincoln Blvd., Middlesex, New Jersey 08846
 Phone 732 469-5720 888 288-5152 Fax 732 469-1919

Part No.: **CBN-L-VM-B-P-XX-XX**

Description: BNC vertical PCB/panel mount jack, low profile, 75 ohms