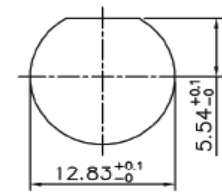
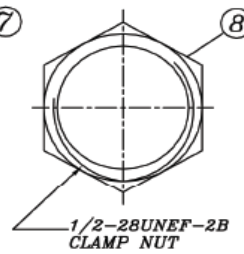
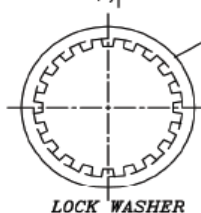


**RECOMMENDED PC BOARD LAYOUT  
WITHOUT MOUNTING POSTS**



**RECOMMENDED MOUNTING HOLE  
MAXIMUM PANEL THICKNESS: 5.5MM**

**MATERIAL & FINISH**

- ① CENTER CONTACT :BRONZE, GOLD PLATING
- ② BODY :ZINC ALLOY NICKEL PLATING
- ③ HOUSING :PBT (94 V-0)
- ④ INSULATOR :PE-606
- ⑤ MOUNTING POST :BRONZE, TIN PLATING
- ⑥ SOLDER TAIL :COPPER WIRE, TIN PLATING
- ⑦ WASHER :STEEL, NICKEL PLATING
- ⑧ NUT :BRASS, NICKEL PLATING

Color note:

- Metal body only available in black
- Dual color options only available for dual port connectors

Series	Profile	Mounting Type	Body Style	Shell Material	Color (see note)		Options
CBN	L	RM	B	P	BK		CP
BNC connector	[blank]=Standard H=High L=Low	VM=Vertical mount RM=Right-angle mount	A=#4-40 threaded sleeve B=Bayonet	M=Metal body P=Plastic body	BK=Black WT=White GN=Green YL=Yellow BL=Blue	RD=Red RW=Red/White RY=Red/Yellow BG=Blue/Green	[blank]=50 ohm (standard) CP=Capacitor type DP=Dual port, R/A mount 75=75 ohm HW=Hardware & nut 30GD=30μ" gold plate BL=Board locks

**RoHS compliant**

Rev.	Description	Date	Approved	Drawing	Name	Date
				Approved	Howard	08/10/99
				Checked	Lizzy	08/10/99
				Drawn	Tina	08/10/99
				0.0 ± 0.35	0.00 ± 0.20	Angles ± 3'
				UNIT: mm		

**Central Components Manufacturing**  
 440 Lincoln Blvd., Middlesex, New Jersey 08846  
 Phone 732 469-5720 888 288-5152 Fax 732 469-1919

Part No.: **CBN-L-RM-B-P-BK-CP**

Description: 50 ohm BNC right-angle PCB mount jack