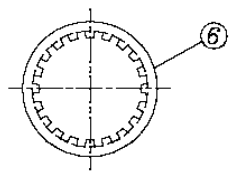
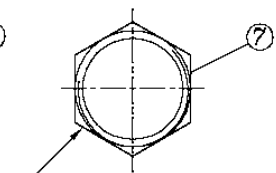


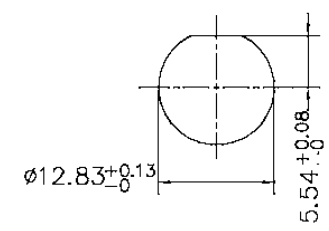
**RECOMMENDED PC BOARD LAYOUT  
WITHOUT MOUNTING POSTS**



**LOCK WASHER**



**1/2-28UNEF-2B  
CLAMP NUT**



**RECOMMENDED MOUNTING HOLE  
MAXIMUM PANEL THICKNESS: 5.5MM**

Color note:

- Metal body only available in nickel plating
- Dual color options only available for dual port connectors

Material and Finish  
 Center contact: Bronze, gold plating  
 Body: Zinc alloy, nickel plating  
 Insulator: PE-606  
 Mounting post: Bronze, tin plating  
 Solder tail: Copper wire, tin plating  
 Washer: Steel, nickel plating  
 Nut: Brass, nickel plating

**RoHS compliant**

Series	Profile	Mounting Type	Body Style	Shell Material	Color (see note)	Options
CBN	X	XX	X	X	XX	XX
BNC connector	H=High L=Low	VM=Vertical mount RM=Right-angle mount	A=#4-40 threaded sleeve B=Bayonet	M=Metal body P=Plastic body	BK=Black, WT=White, GN=Green, YL=Yellow, BL=Blue, RD=Red, RW=Red/White, RY=Red/ Yellow, BG=Blue/Green (blank)=Metal Body	[blank]=50 ohm (standard) CP=Capacitor type DP=Dual port, R/A mount 75=75 ohm HW=Hardware & nut 30GD=30µ" gold plate BL=Board locks

Rev.	Description	Date	Approved	Drawing	Name	Date
A	PNT	3/16/10	GL	Approved	Howard	08/10/99
				Checked	Lizzy	08/10/99
				Drawn	Tina	08/10/99
				0.0 ± 0.35	0.00 ± 0.20	Angles ± 3'
				UNIT: mm		

**Central Components Manufacturing**  
 440 Lincoln Blvd., Middlesex, New Jersey 08846  
 Phone 732 469-5720 888 288-5152 Fax 732 469-1919

Part No.: **CBN-H-VM-B-M-75**  
 Description: BNC PCB vertical mount bayonet style, black, 75 ohm version