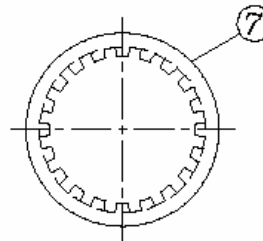
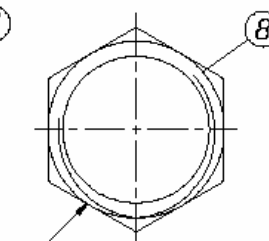


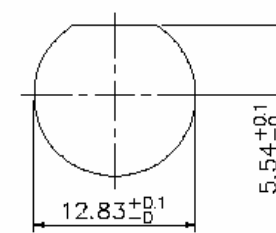
Recommended PC Board layout without mounting posts



LOCK WASHER



1/2-28UNEF-2B CLAMP NUT



Recommended mounting hole
Maximum panel thickness: 5.5mm

Note: Dual color options only available for dual port connectors

Item	Name	Material	Finish	Item	Name	Material	Finish
1	Center contact	Bronze	Gold	5	Mounting post	Bronze	Tin
2	Body	Zinc alloy	Nickel	6	Solder tail	Copper wire	Tin
3	Housing	PBT UL94V-0	White	7	Washer	Steel	Nickel
4	Insulator	PE-606		8	Nut	Brass	Nickel

Series	Profile	Mounting Type	Body Style	Shell Material	Color (see note)		Options
CBN	X	XX	X	X	XX		XX
BNC connector	H=High L=Low	VM=Vertical mount RM=Right-angle mount	A=#4-40 threaded sleeve B=Bayonet	P=Plastic body M=Metal body (black only)	BK=Black (std), WT=White (std), GN=Green, YL=Yellow, BL=Blue	RD=Red, RW=Red/ White, RY=Red/Yellow, BG=Blue/Green	[blank]=50 ohm (std) CP=Capacitor type DP=Dual port, R/A mount 75=75 ohm HW=Hardware & nut 30GD=30µ" gold plate BL=Board locks

RoHS compliant

Rev.	Description	Date	Approved	Drawing	Name	Date
				Approved	Howard	08/10/99
				Checked	Lizzy	08/10/99
				Drawn	Tina	08/10/99
				0.0 ± 0.35	0.00 ± 0.20	Angles ± 3'
				UNIT: mm		

Central Components Manufacturing
 440 Lincoln Blvd., Middlesex, New Jersey 08846
 Phone 732 469-5720 888 288-5152 Fax 732 469-1919

Part No.: **CBN-H-RM-B-P-BK-XX**

Description: BNC right-angle PCB mount jack