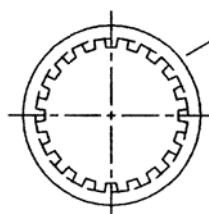
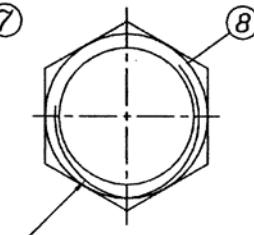


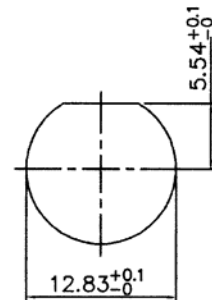
RECOMMENDED PC BOARD LAYOUT WITHOUT MOUNTING POSTS



LOCK WASHER



1/2-28UNEF-2B CLAMP NUT



RECOMMENDED MOUNTING HOLE
MAXIMUM PANEL THICKNESS: 5.5MM

Item	Description	Material	Finish
1	Center contact	Bronze	Gold
2	Body	Zinc alloy	Nickel
3	Housing	PBT 94V-0	Black
4	Insulator	PE 606	
5	Hollow post	Bronze	Tin
6	Solder tail	Copper wire	Tin
7	Washer	Steel	Nickel
8	Nut	Brass	Nickel

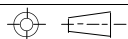
Color note:

- Metal body only available in black
- Dual color options only available for dual port connectors

Series	Profile	Mounting Type	Body Style	Shell Material	Color (see note)	Options
CBN	X	XX	X	X	XX	XX
BNC connector	H=High L=Low	VM=Vertical mount RM=Right-angle mount	A=#4-40 threaded sleeve B=Bayonet	M=Metal body P=Plastic body	BK=Black, WT=White, GN=Green, YL=Yellow, BL=Blue, RD=Red, RW=Red/White, RY=Red/ Yellow, BG=Blue/Green	[blank]=50 ohm (standard) CP=Capacitor type DP=Dual port, R/A mount 75=75 ohm HW=Hardware & nut 30GD=30µ" gold plate BL=Board locks

RoHS compliant

Rev.	Description	Date	Approved	Drawing	Name	Date
				Approved	Howard	08/10/99
				Checked	Lizzy	08/10/99
				Drawn	Tina	08/10/99
				0.0 ± 0.35	0.00 ± 0.20	Angles ± 3'



UNIT: mm



Central Components Manufacturing

440 Lincoln Blvd., Middlesex, New Jersey 08846
Phone 732 469-5720 888 288-5152 Fax 732 469-1919

Part No.: **CBN-H-RM-B-P-BK-75**

Description: 75 ohm BNC right-angle PCB mount jack