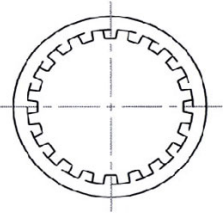
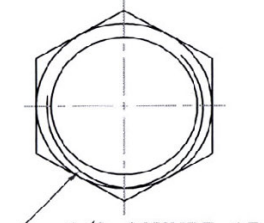


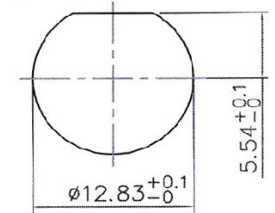
RECOMMENDED PC BOARD LAYOUT WITHOUT MOUNTING POSTS



⑦ LOCK WASHER



⑧ CLAMP NUT



RECOMMENDED MOUNTING HOLE  
MAXIMUM PANEL THICKNESS: 5.5MM

Item	Name	Material	Finish
1	Center Contact	Phosphor Bronze	Gold Plating
2	Body	Zinc Alloy	Nickel Plating
3	Housing	PBT (94 V-0)	Black
4	Insulator	PE-606	
5	Mounting Post	Bronze	Tin Plating
6	Solder Tail	Copper Wire	Tin Plating
7	Washer	Steel	Nickel Plating
8	Nut	Brass	Nickel Plating

RoHS compliant

Rev.	Description	Date	Approved	Drawing	Name	Date
				Approved	Howard	02/11/10
				Checked	Lizzy	02/11/10
				Drawn	Tina	02/11/10
				0.0 ± 0.35	0.00 ± 0.20	Angles ± 3'
				UNIT: mm		

**Central Components Manufacturing**  
 440 Lincoln Blvd., Middlesex, New Jersey 08846  
 Phone 732 469-5720 888 288-5152 Fax 732 469-1919

Part No.: **CBN-H-ABR184-B-P**

Description: 75Ω BNC R/A PCB/Panel Mount Jack, plastic body w/ hardware