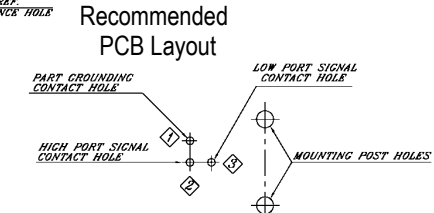
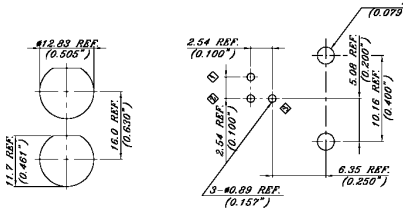


SPECIFICATIONS

Frequency range: 0 to 1 GHz
 Voltage rating: 500 VRMS
 Impedance: 75 ohms
 Center contact: Phosphor bronze
 Contact plating: Gold contact
 Tin tail
 Contact resistance: 3 milliohms max.
 Ground terminal: Copper
 Terminal plating: Tin
 Body: Zinc alloy
 Body plating: Nickel
 Insulator: Polypropylene
 Insulation resistance: 5000 megohms min.
 Mounting post: Brass, tin plated
 Withstanding: 1500 VRMS
 Durability: 500 cycles min.
 Operating temp.: -65°C to +165°C



Color note:

- Metal body only available in black
- Dual color options only available for dual port connectors

Panel cutout

Series	Profile	Mounting Type	Body Style	Shell Material	Color (see note)	Options
CBN	960K	XX	X	X	XX	XX
BNC connector	960K=960K profile H=High L=Low	VM=Vertical mount RM=Right-angle mount	A=#4-40 threaded sleeve B=Bayonet	M=Metal body P=Plastic body	BK=Black, WT=White, GN=Green, YL=Yellow, BL=Blue, RD=Red, RW=Red/White, RY=Red/ Yellow, BG=Blue/Green	[blank]=50 ohm (standard) CP=Capacitor type DP=Dual port, R/A mount 75=75 ohm HW=Hardware & nut 30GD=30µ" gold plate BL=Board locks

RoHS compliant

Rev.	Description	Date	Approved	Drawing	Name	Date
				Approved	Howard	03/10/02
				Checked	Lizzy	03/10/02
				Drawn	Tina	03/10/02
				0.0 ± 0.35	0.00 ± 0.20	Angles ± 3'
				UNIT: mm		

Central Components Manufacturing
 440 Lincoln Blvd., Middlesex, New Jersey 08846
 Phone 732 469-5720 888 288-5152 Fax 732 469-1919

Part No.: **CBN-960K-RM-B-M-BK-DP-75**

Description: All metal right angle dual port 75 ohm BNC connector, PCB mount