

SPECIFICATIONS

Voltage Rating:	500 V RMS
Mating/Unmating:	500 Cycles
Nominal Impedance:	75 Ohms
Frequency Range:	0~1 GHz
Contact Resistance:	3.0 Milliohms Max
Insulation Resistance:	5000 Megohms Min
Withstanding:	1500 VDC
Operating Temp:	65°C to +165°C

Name	Material & Plating
Conn. Body	Nickel Plating over Zinc Alloy
Center Contact	Phosphor Bronze with Gold Plating at Contact Area Tin Plating at Tail
Insulator	Polypropylene UL94HB
Spring Washer	Nickel Plating over Phosphor Bronze
Mounting Post	Tin Plating over Brass
Grounding Terminal	Tin Plating over Copper Wire
Ceramic Chip Capacitor	4700 Pico Farad±10%
Housing	PBT+30%G.F. (UL94V-0)

Series	Type	Board Mounting	Coupling	Shell Material	Options
CBN	933VK	DP	B	M	XX
BNC connector	Type 933VK	DP=Dual port R/A	B=Bayonet	M=Metal body	[blank]=50 ohm (standard) 75=75 ohm CP=Capacitor type 30GD=30µm gold plate BL=Board locks HW=Hardware & nut

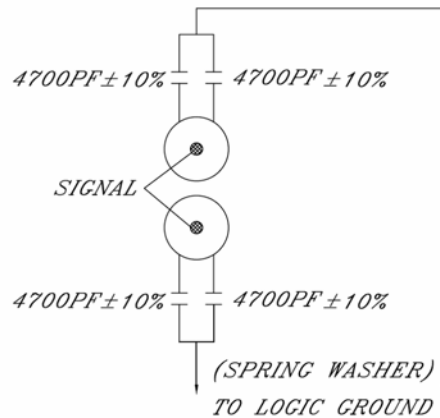
RoHS compliant

Rev.	Description	Date	Approved	Drawing	Name	Date
				Approved	Howard	04/15/11
				Checked	Lizzy	04/15/11
				Drawn	Tina	04/15/11
				0.0 ± 0.35	0.00 ± 0.20	Angles ± 3'
						UNIT: mm

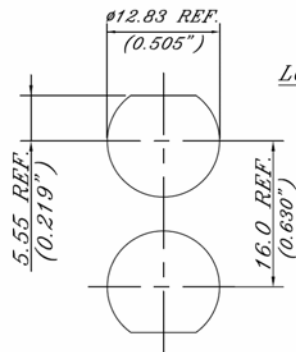
Central Components Manufacturing
 440 Lincoln Blvd., Middlesex, New Jersey 08846
 Phone 732 469-5720 888 288-5152 Fax 732 469-1919

Part No.: **CBN-933-DP-B-M-75-CP-BL**

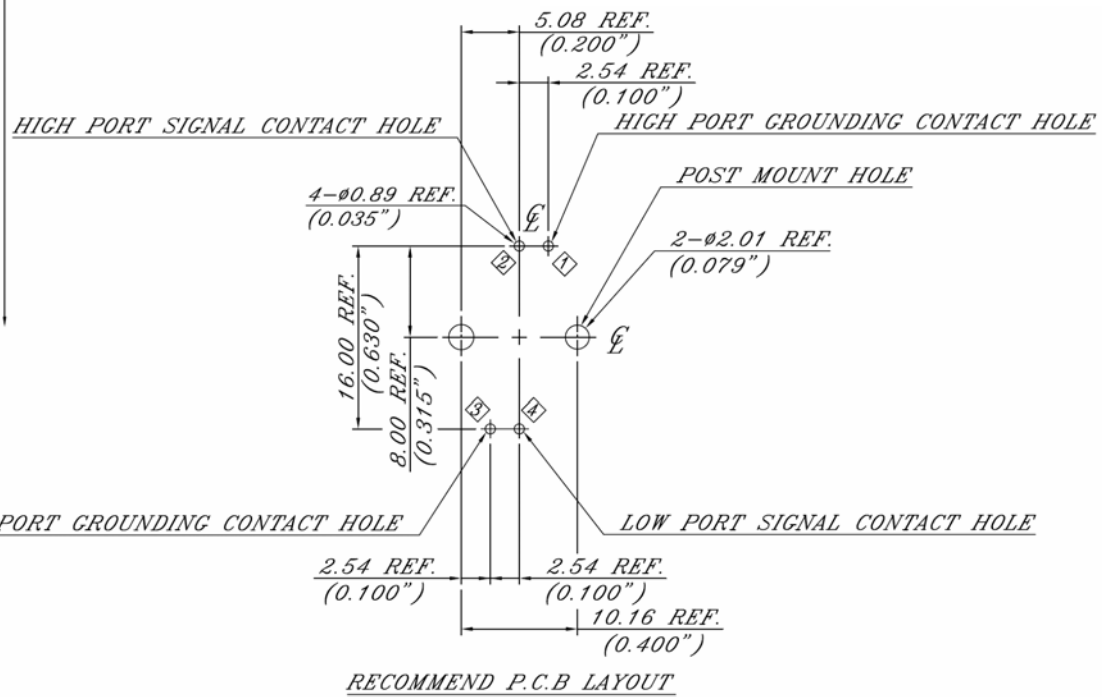
Description: All metal right angle dual port 75 ohm BNC connector, PCB mount



CAPACITOR CIRCUIT DIAGRAM



PANEL CUTOUT



Rev.	Description	Date	Approved	Drawing	Name	Date
				Approved	Howard	04/15/11
				Checked	Lizzy	04/15/11
				Drawn	Tina	04/15/11
				0.0 ± 0.35	0.00 ± 0.20	Angles ± 3'
						UNIT: mm
						Central Components Manufacturing 440 Lincoln Blvd., Middlesex, New Jersey 08846 Phone 732 469-5720 888 288-5152 Fax 732 469-1919
						Part No.: CBN-933-DP-B-M-75-CP-BL
						Description: All metal right angle dual port 75 ohm BNC connector, PCB mount