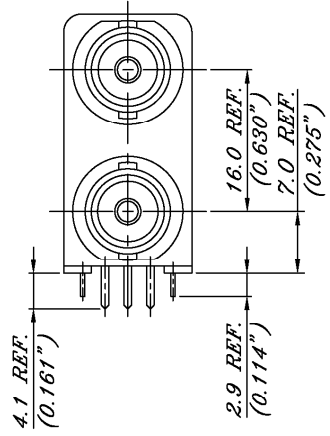
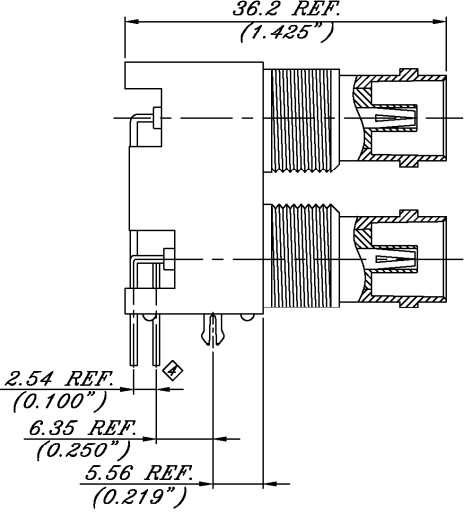
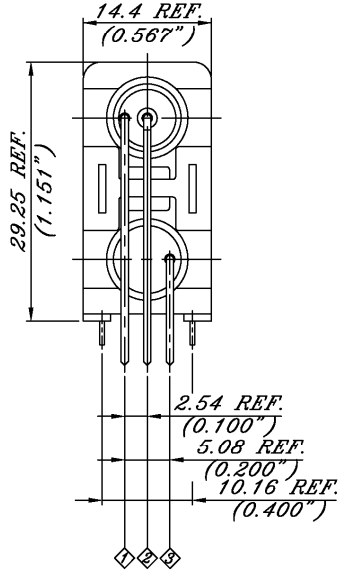
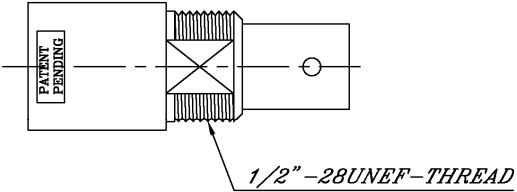


**SPECIFICATIONS**

Voltage Rating: 500V RMS  
 Mating/Unmating: 500 Cycles  
 Impedance: 75 Ohms  
 Frequency Range: 0~1 GHz  
 Contact Resistance: 3.0 Milliohms Max.  
 Insulation Resistance: 5000 Megohms Min  
 Withstanding: 1500 V RMS  
 Temperature Range: -65°C to +165°C



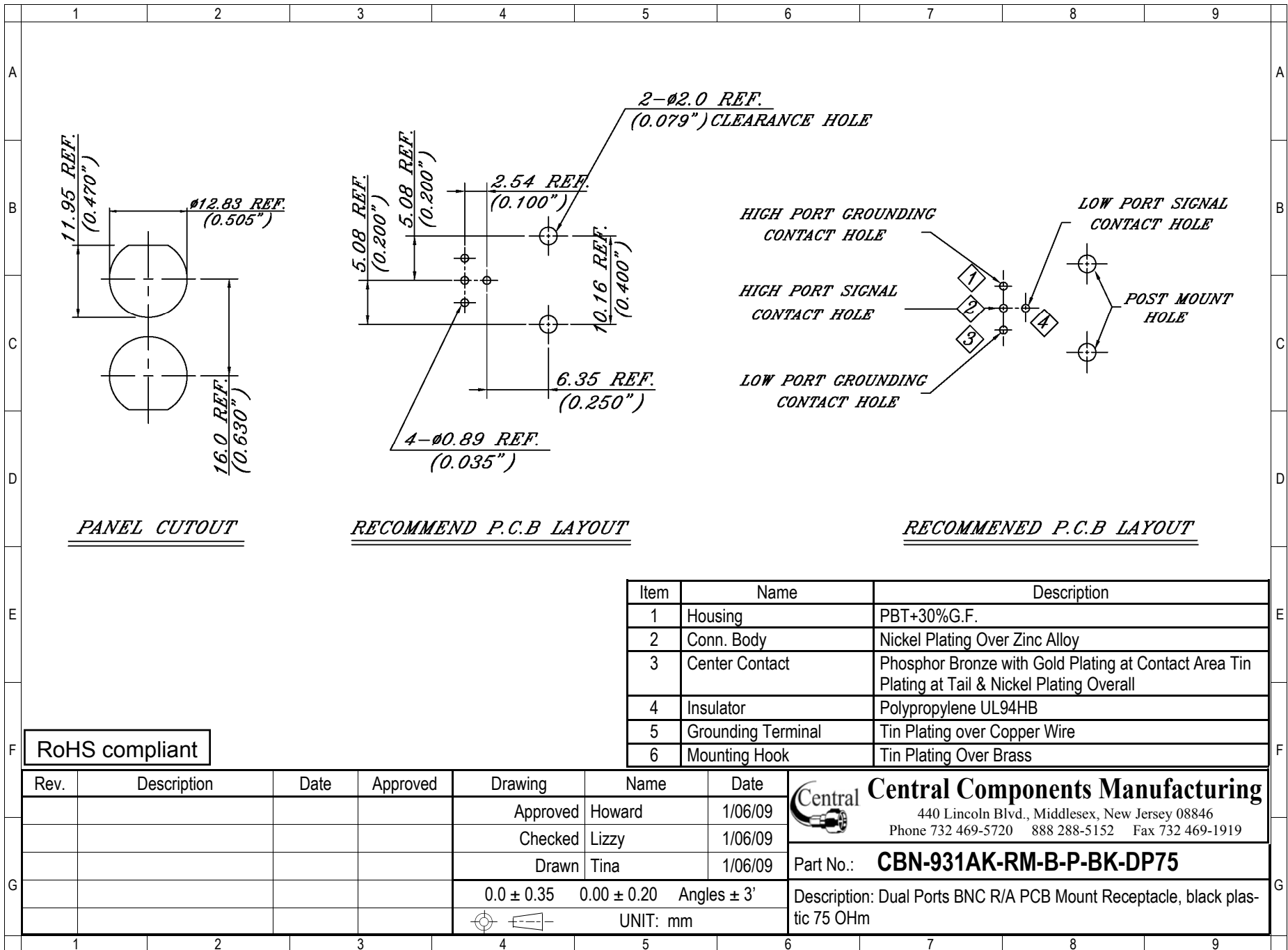
RoHS compliant

Rev.	Description	Date	Approved	Drawing	Name	Date
				Approved	Howard	1/06/09
				Checked	Lizzy	1/06/09
				Drawn	Tina	1/06/09
				0.0 ± 0.35	0.00 ± 0.20	Angles ± 3'
				UNIT: mm		

**Central Components Manufacturing**  
 440 Lincoln Blvd., Middlesex, New Jersey 08846  
 Phone 732 469-5720 888 288-5152 Fax 732 469-1919

Part No.: **CBN-931AK-RM-B-P-BK-DP75**

Description: Dual Ports BNC R/A PCB Mount Receptacle, black plastic 75 OHm



Item	Name	Description
1	Housing	PBT+30%G.F.
2	Conn. Body	Nickel Plating Over Zinc Alloy
3	Center Contact	Phosphor Bronze with Gold Plating at Contact Area Tin Plating at Tail & Nickel Plating Overall
4	Insulator	Polypropylene UL94HB
5	Grounding Terminal	Tin Plating over Copper Wire
6	Mounting Hook	Tin Plating Over Brass

RoHS compliant

Rev.	Description	Date	Approved	Drawing	Name	Date
				Approved	Howard	1/06/09
				Checked	Lizzy	1/06/09
				Drawn	Tina	1/06/09

0.0 ± 0.35    0.00 ± 0.20    Angles ± 3'

UNIT: mm

**Central Components Manufacturing**  
 440 Lincoln Blvd., Middlesex, New Jersey 08846  
 Phone 732 469-5720 888 288-5152 Fax 732 469-1919

Part No.: **CBN-931AK-RM-B-P-BK-DP75**

Description: Dual Ports BNC R/A PCB Mount Receptacle, black plastic 75 OHm