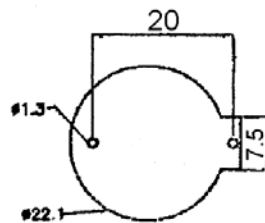
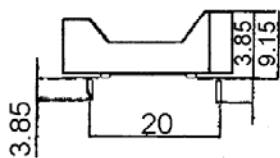
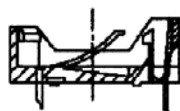


SPECIFICATIONS

Contact material: Phosphor bronze
 Contact plating: 100μ" min. tin over 50μ" min. nickel
 Housing material: Nylon 46, UL94V-0, black
 Battery dimension: 19.8mm diameter, 3.2mm thick



PCB Hole Layout



Section A—A

RoHS compliant

Rev.	Description	Date	Approved	Drawing	Name	Date
				Approved	Howard	05/22/07
				Checked	Lizzy	05/22/07
				Drawn	Tina	05/22/07
				0.0 ± 0.35	0.00 ± 0.20	Angles ± 3'
				UNIT: mm		

Central Components Manufacturing
 440 Lincoln Blvd., Middlesex, New Jersey 08846
 Phone 732 469-5720 888 288-5152 Fax 732 469-1919

Part No.: **BTH-CH75-2032LF**

Description: Battery receptacle