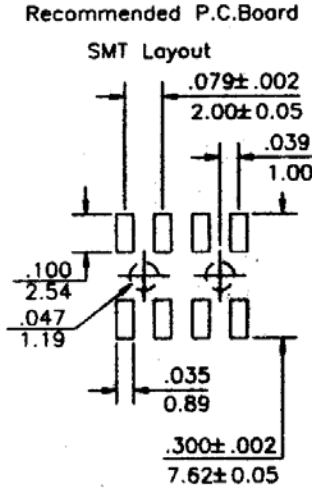
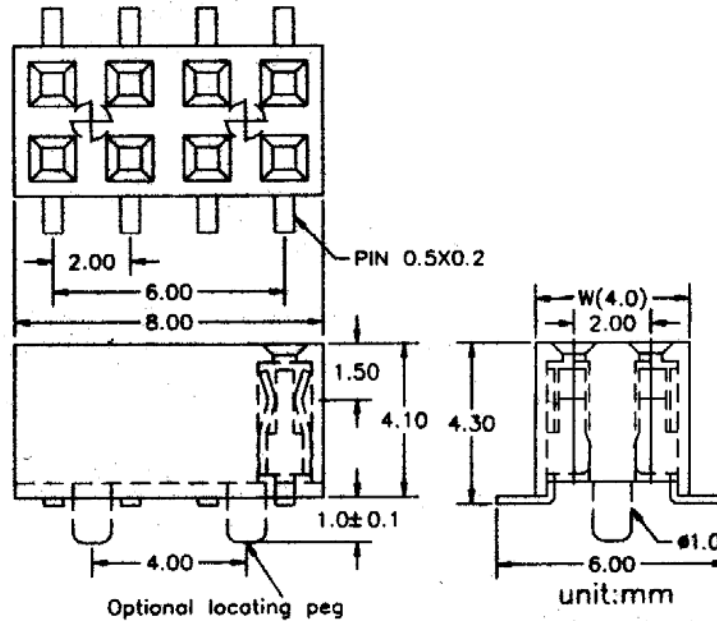


**SPECIFICATIONS**

Current rating: 1 amp  
 Contact material: Phosphor bronze  
 Contact resistance: 20 milliohms max.  
 Insulator material: Nylon 6T, UL 94V-0, black  
 Insulator resistance: 5,000 megohms min.  
 Withstanding: 500VAC for 1 min.  
 Operating temperature: -40°C to +105°C  
 Processing temperature: 230°C/60sec.



Series	Rows	Profile	Positions	Plating	Options
BRS	XX	XX	XX	XX	XX
2mm receptacle strip	01=Single 02=Double	[blank]=4.3mm high LPC=4.0mm	1-40 Single row 2-80 Double row	GD=Gold TN=Tin	SM=Surface mount CP=Centering post PPL=Pick & place pad

RoHS compliant

Rev.	Description	Date	Approved	Drawing	Name	Date
A	RoHS	09/20/05	Tom	Approved	Howard	09/10/99
B	Order info	09/23/05	Tom	Checked	Lizzy	09/10/99
C	Spec	10/04/05	Tom	Drawn	Tina	09/10/99
				0.0 ± 0.35	0.00 ± 0.20	Angles ± 3'
				UNIT: mm		

**Central Components Manufacturing**  
 440 Lincoln Blvd., Middlesex, New Jersey 08846  
 Phone 732 469-5720 888 288-5152 Fax 732 469-1919

Part No.: **BRS-02-XX-XX-SM**  
 Description: Female header, 2mm pitch, SMD type, dual row, board to board connector