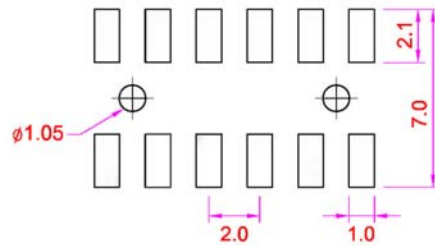
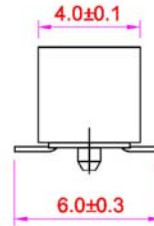
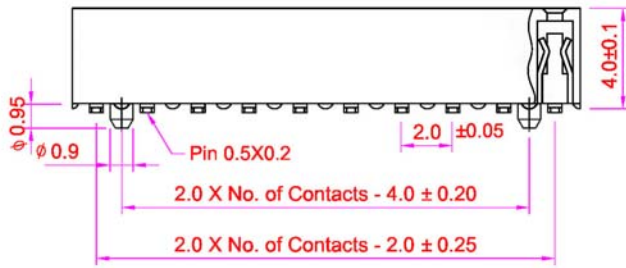


**Recommended
P.C. Board SMD Layout**



SPECIFICATIONS

Current Rating: 2Amps
 Contact Plating: Gold Flash Standard
 Contact Resistance: 20 mohms max.
 Insulation Material: Polyester, UL94V-0
 Insulation Resistance: 1000 Mehohms min.
 Withstanding: AC 500V
 Operating Temp: -40C ~ +105C



Series	Rows	Profile	Positions	Tail	Plating	Options
BRS	02	LPC	XX	G	XX	XX
2mm receptacle strip	02=Double	LPC=4.0mm	03-40 Single Row 06-80 Double Row	G=6.0mm	TN=Tin GS=Gold SG=Selective Gold	SM=Surface mount CP=Centering post PPL=Pick & Place pad PPT=Pick & Place tape

RoHS compliant

Rev.	Description	Date	Approved	Drawing	Name	Date
				Approved	Howard	03/05/08
				Checked	Lizzy	03/05/08
				Drawn	Tina	03/05/08
				0.0 ± 0.35	0.00 ± 0.20	Angles ± 3'
				UNIT: mm		

Central Components Manufacturing
 440 Lincoln Blvd., Middlesex, New Jersey 08846
 Phone 732 469-5720 888 288-5152 Fax 732 469-1919

Part No.: **BRS-02-LPC-XX-G-XX-SMCP**

Description: Female Header 2.0 x 2.0mm