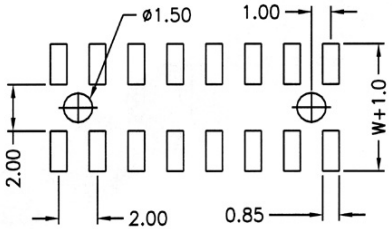
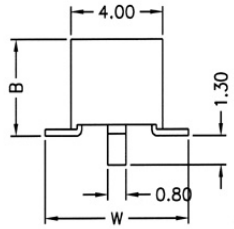
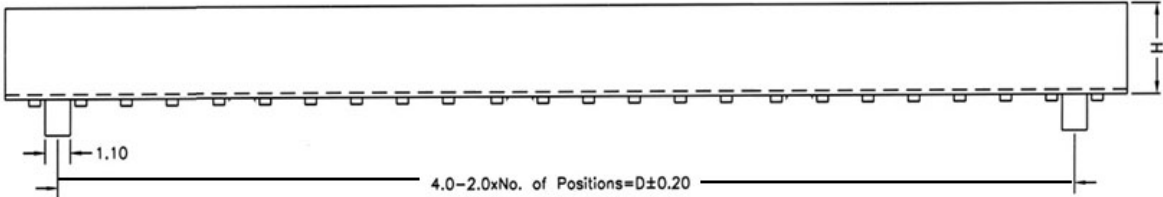


2.00 ± 0.10 PIN 0.50X0.20
 $2.0 \times \text{No. of Contacts} - 2.00 = A \pm 0.25$ of Contacts - $2.00 = A \pm 0.25$
 $0.60 + 2.0 \times \text{No. of Positions} = C \pm 0.38$ 0 X No. of Positions = $C \pm 0.38$



Recommended PC Board Hole Layout


SPECIFICATIONS

- Current rating: 1 amp
- Contact material: Phosphor bronze
- Contact resistance: 20 milliohms max.
- Insulator material: Nylon 6T, UL94V-0, black
- Insulator resistance: 5,000 megohms min.
- Withstanding: 500VAC for 1 min.
- Operating temperature: -40°C to +105°C
- Processing temperature: 230°C/60sec.

RoHS compliant

Series	Rows	Profile	Positions	Tail	Plating	Options
BRS	02	XX	48	A	GD	HT-TB
2mm receptacle strip	02=Double	[blank]=4.3mm high	8 Positions	A=2.4 (std)	GD=Gold	TB=Tube HT=High Temp

Rev.	Description	Date	Approved	Drawing	Name	Date
				Approved	Howard	08/16/02
				Checked	Lizzy	08/16/02
				Drawn	Tina	08/16/02
				0.0 ± 0.35	0.00 ± 0.20	Angles ± 3'
				UNIT: mm		


Central Components Manufacturing
 440 Lincoln Blvd., Middlesex, New Jersey 08846
 Phone 732 469-5720 888 288-5152 Fax 732 469-1919
 Part No.: **BRS-02-48-A-GD-HT-TB**
 Description: Header, female, 2mm pitch, SMD type, dual row, board to board connector