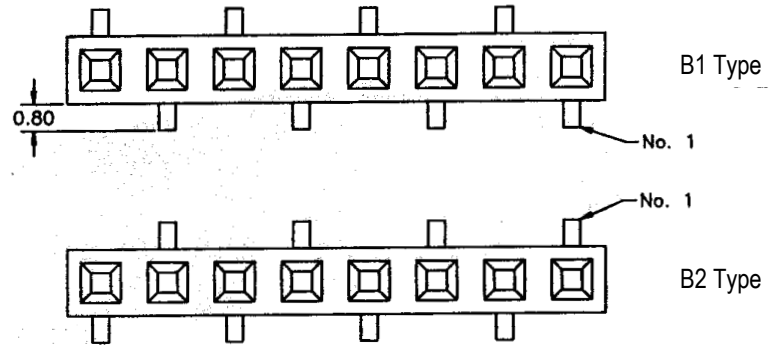
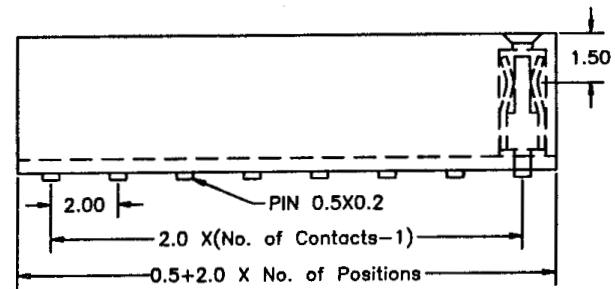
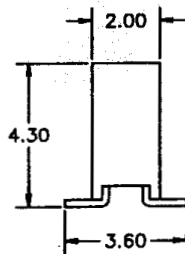
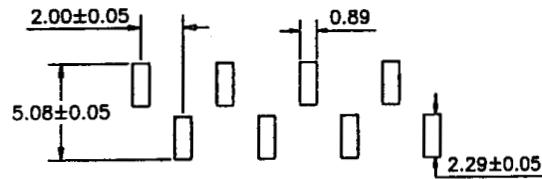


**SPECIFICATIONS**

Current rating: 1 amp  
 Contact material: Phosphor bronze  
 Contact plating: Available in tin, gold or dual plating  
 Gold available in flash, 10µ", 15µ" and 30µ"  
 Contact resistance: 20 milliohms max.  
 Insulation material: Polyester, UL94V-0  
 Insulation resistance: 5,000 megohms min.  
 Withstanding: 500VAC for 1 min.  
 Operating temperature: -40°C to +105°C

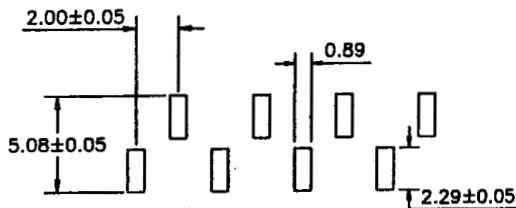


Recommended PC Board  
 SMD Layout  
 B1 Type



Unit:mm

B2 Type



RoHS compliant

Rev.	Description	Date	Approved	Drawing	Name	Date
				Approved	Howard	08/10/99
				Checked	Lizzy	08/10/99
				Drawn	Tina	08/10/99
				0.0 ± 0.35	0.00 ± 0.20	Angles ± 3'
				UNIT: mm		

**Central Components Manufacturing**  
 440 Lincoln Blvd., Middlesex, New Jersey 08846  
 Phone 732 469-5720 888 288-5152 Fax 732 469-1919

Part No.: **BRS-01-XX-XX-SMX**

Description: Header, female, 2mm (0.079") pitch, single row, SMD type