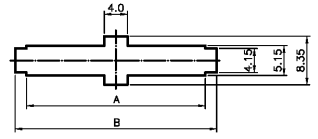
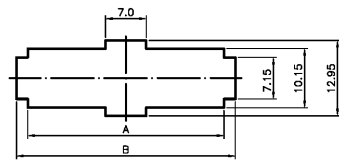


SPECIFICATIONS
 Current Rating: 3A AC/DC
 Voltage Rating: 250V AC/DC
 Material: Nylon 66 UL94V-0
 Insulation Resistance: 500MΩ min
 Withstanding: 1000V AC/minute
 Temperature Range: -25C to +85C



2~12 Circuit (Single Row)



16~18 Circuit (Double Row)

Dimensions					
Circuit	A	B	Circuit	A	B
2	5.7	9.6	9	23.2	27.1
3	8.2	12.1	10	25.7	29.6
4	10.7	14.6	11	28.2	32.1
5	13.2	17.1	12	30.7	34.6
6	15.7	19.6	16	20.7	24.6
7	18.2	22.1	18	23.2	27.2
8	20.7	24.6			

RoHS compliant

Rev.	Description	Date	Approved	Drawing	Name	Date
				Approved	Howard	04/30/08
				Checked	Lizzy	04/30/08
				Drawn	Tina	04/30/08
				0.0 ± 0.35	0.00 ± 0.20	Angles ± 3'
						UNIT: mm

Central Components Manufacturing
 440 Lincoln Blvd., Middlesex, New Jersey 08846
 Phone 732 469-5720 888 288-5152 Fax 732 469-1919

Part No.: **JS-CH-6503-XX**

Description: 2.50mm Power Connector Plug Housing