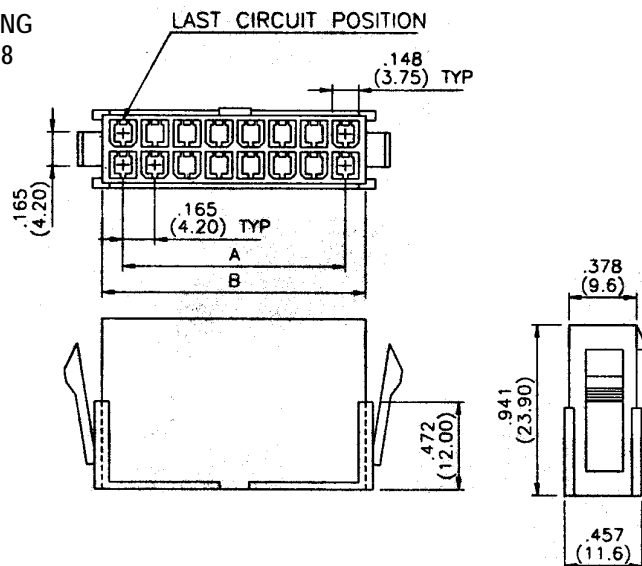
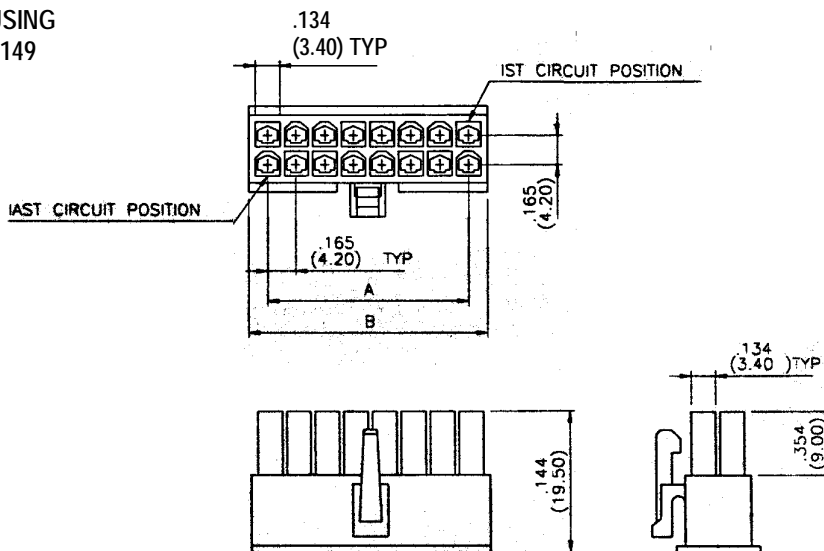


**HOUSING JS-1148**



**HOUSING JS-1149**



**SPECIFICATIONS**

Voltage rating: 250 VAC/VDC  
 Current rating: 7 amps  
 Contact resistance: 10 milliohms max.  
 Contact material: Brass  
 Contact material: Tin  
 Insulation material: Nylon 66, UL94V-2 or UL94V-0  
 Insulation resistance: 1,000 megohms min.  
 Withstanding: 1,500 VAC for 1 min.  
 Poles: 2-24  
 Temperature range: -85°C to +105°C

Dimensions					
Pos.	A	B	Pos.	A	B
2		0.217 (05.5)	14	0.992 (25.2)	1.209 (30.7)
4	0.165 (04.2)	0.382 (09.7)	16	1.157 (29.4)	1.374 (34.9)
6	0.331 (08.4)	0.547 (13.9)	18	1.322 (33.6)	1.539 (39.1)
8	0.496 (12.6)	0.713 (18.1)	20	1.487 (37.8)	1.705 (43.3)
10	0.661 (16.8)	0.878 (22.3)	22	1.652 (42.0)	1.870 (47.5)
12	0.827 (21.0)	1.043 (26.5)	24	1.817 (46.2)	2.035 (51.7)

Series	Type	Positions	Options
JS	XXXX	XX	XX
Power connector	1148 (side latches) 1149 (top latch)	2, 4, 6, 8, 10, 12, 14, 16, 18, 20, 22, 24	[blank]=None (94V-2) 0=94V-0

**RoHS compliant**

Rev.	Description	Date	Approved	Drawing	Name	Date
				Approved	Howard	08/10/99
				Checked	Lizzy	08/10/99
				Drawn	Tina	08/10/99
				0.0 ± 0.35	0.00 ± 0.20	Angles ± 3'
				UNIT: mm		

**Central Components Manufacturing**  
 440 Lincoln Blvd., Middlesex, New Jersey 08846  
 Phone 732 469-5720 888 288-5152 Fax 732 469-1919

Part No.: **JS-CH-1148/1149-XX-X**

Description: Power connector, .165" (4.20mm) pitch