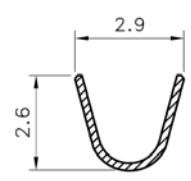
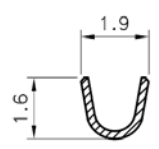


SPECIFICATIONS
 Voltage rating: 250V AC/DC
 Current rating: 3A AC/DC
 Insulation resistance: 1000M Ohms min.
 Contact resistance: 20m ohms max.
 Withstanding: 800 V AC/min
 Temp. range: -25°C to +85°C

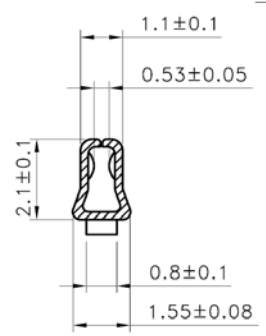
Material: Phos. Bronze
 Thickness: 0.2mm
 Plating: Tin
 Wire size: 22-28AWG
 Package: 10,000 pc reel



A-A SEC



B-B SEC



C-C SEC

RoHS compliant

Rev.	Description	Date	Approved	Drawing	Name	Date
				Approved	Howard	5/16/08
				Checked	Lizzy	5/16/08
				Drawn	Tina	5/16/08
				0.0 ± 0.35	0.00 ± 0.20	Angles ± 3'
				UNIT: mm		

Central Components Manufacturing
 440 Lincoln Blvd., Middlesex, New Jersey 08846
 Phone 732 469-5720 888 288-5152 Fax 732 469-1919

Part No.: **JS-CH-1131-T**

Description: 2.5mm crimp connector terminal