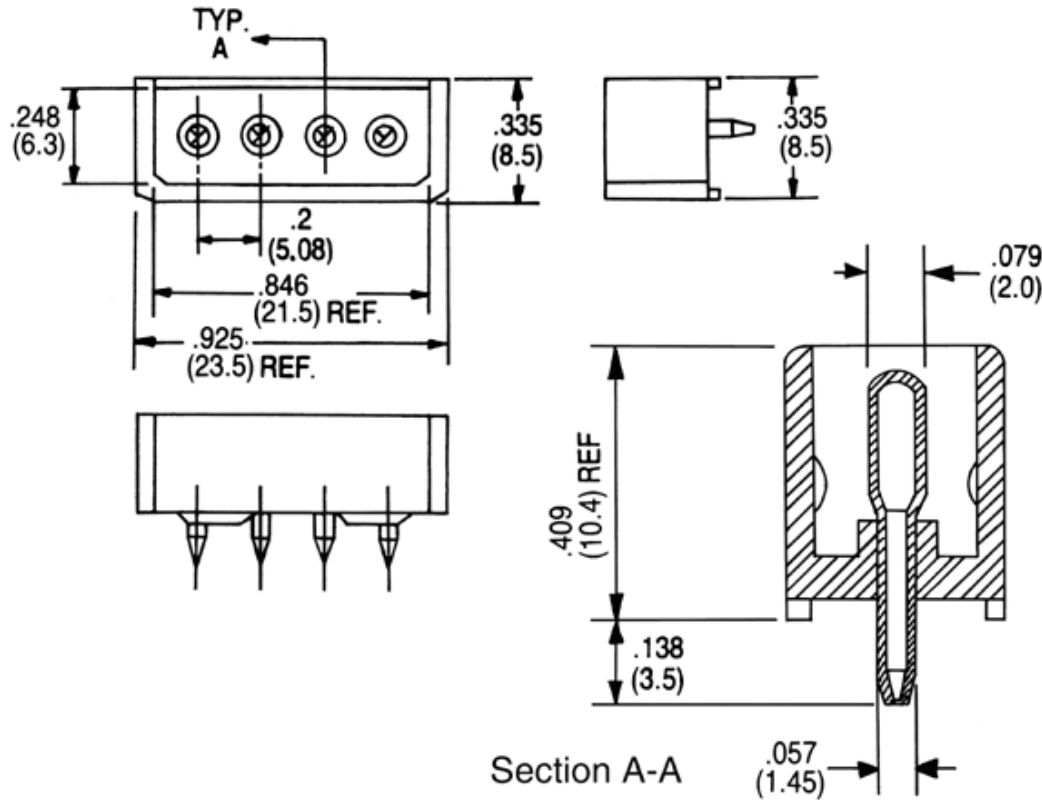


Wafer (JS-1114-04WS), top entry type (180°)



SPECIFICATIONS

Voltage rating:	250 VAC/DC
Current rating:	7 Aamps
Contact material:	Brass
Contact plating:	Tin
Contact resistance:	20 milliohms max.
Body material:	Nylon 66, UL94V-2
Insulation resistance:	1000 megohms min.
Withstanding:	1500 VAC/1-min.

RoHS compliant

Rev.	Description	Date	Approved	Drawing	Name	Date
				Approved	Howard	08/10/05
				Checked	Lizzy	08/10/05
				Drawn	Tina	08/10/05
				0.0 ± 0.35	0.00 ± 0.20	Angles ± 3'
				UNIT: mm		

**Central Components Manufacturing**  
 440 Lincoln Blvd., Middlesex, New Jersey 08846  
 Phone 732 469-5720 888 288-5152 Fax 732 469-1919

Part No.: **JS-CH-1114-04WS**

Description: 5.08mm disk drive power connector wafer, vertical