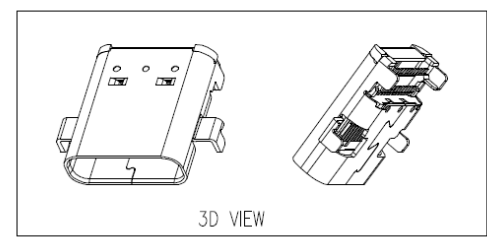
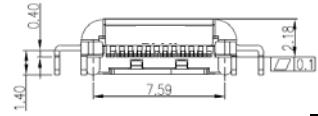
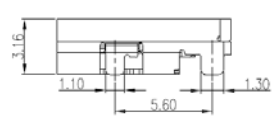
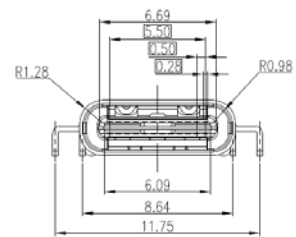
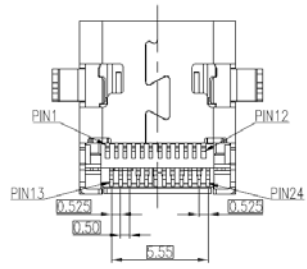


PCB LAYOUT



3D VIEW



SPECIFICATIONS

- Current: 5A Max
- Withstanding: 100V AC
- Contact Resistance: 40mΩ Max.
- Insulation Resistance: 100MΩ Min
- Insertion: 5~20N
- Extraction: 8~20N
- Durability: 10000 Cycles
- Operating Temp: -55°C to +85°C

Item	Name	Material
1	Molding A	Thermoplastic, Black
2	Contact-Long	Gold 30u" Min. Nickel 80u" Min.
3	Contact-Short	Gold 30u" Min. Nickel 80u" Min.
4	Mid-Plate	Stainless Steel, Nickel 80u" Min
5	Bottom EMI Pad	Stainless Steel, Nickel 80u" Min
6	Top EMI Pad	Stainless Steel, Nickel 80u" Min
7	Shell	Stainless Steel, Nickel 80u" Min
8	Molding-B	Thermoplastic, Black

Series	Type	Style	Ports/Gender/Cont/ Mount	Material	Shell Plating	Contact Plating	Color
CUSB	C	PG	1F24RST	L	X	GD30	BK
USB Connector	Type C	See Drawing	Single Port Female 24 Contacts, side entry SMT + thru hole	L=LCP	N=Nickel (std)	30μ" Gold	BK=Black

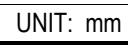
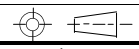
RoHS compliant

Rev.	Description	Date	Approved	Drawing	Name	Date
				Approved	Howard	04/03/15
				Checked	Lizzy	04/03/15
				Drawn	Tina	04/03/15
				0.0 ± 0.35	0.00 ± 0.20	Angles ± 3'
				UNIT: mm		

Central Components Manufacturing
 440 Lincoln Blvd., Middlesex, New Jersey 08846
 Phone 732 469-5720 888 288-5152 Fax 732 469-1919

Part No.: **CUSB-C-PG-1F24RST-L-N-GD30-BK**

Description: USB type C 3.1 female mid mount connector



Angles ± 3'

UNIT: mm