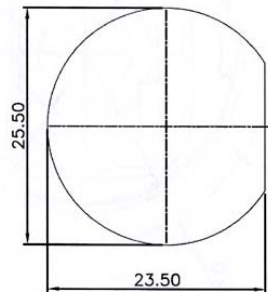
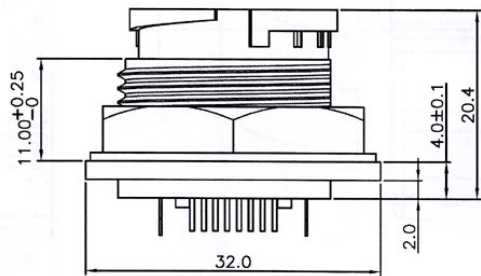


PCB LAYOUT/TOP VIEW



Panel Cut-Out

**SPECIFICATIONS**

- Plastic Housing: High Temp Thermoplastic  
Flammability Rating UL94V-0
- Contact Material: Phosphor Bronze
- Plating: 30u" Gold Plating over Nickel in Contact Area  
Tin Plating over Nickel in Solder Area
- Shielded: Brass with Nickel Plating
- Nut: Thermoplastic, UL94V-0
- Gasket: EPDM
- Protection: IP67

RoHS compliant

Rev.	Description	Date	Approved	Drawing	Name	Date
				Approved	Howard	02/26/98
				Checked	Lizzy	02/26/98
				Drawn	Tina	02/26/98
				0.0 ± 0.35	0.00 ± 0.20	Angles ± 3'
						UNIT: mm

**Central Components Manufacturing**  
 440 Lincoln Blvd., Middlesex, New Jersey 08846  
 Phone 732 469-5720 888 288-5152 Fax 732 469-1919

Part No.: **CTJ-8-08-3351D-BK-P2**

Description: Waterproof Cat5 Cable, Socket