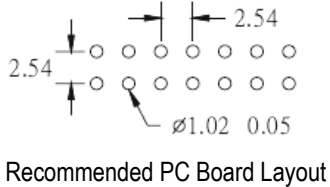


SPECIFICATIONS

Current rating: 2 amps
 Contact material: Brass
 Contact resistance: 30 milliohms max.
 Insulation material: PBT, glass reinforced, UL94V-0
 Insulation resistance: 3,000 megohms min.
 Withstanding: 500VAC for 1 min.
 Operating temperature: -40°C to +105°C

Dimensions			
Pos.	A	B	C
6	15.28	12.42	5.08
8	17.82	14.96	7.62
10	20.36	17.50	10.16
12	22.90	20.04	12.70
14	25.44	22.58	15.24
16	27.98	25.12	17.78
20	33.06	30.20	22.86
24	38.14	35.28	27.94
26	40.68	37.82	30.48
30	45.76	42.90	35.56
34	50.84	47.98	40.64
40	58.46	55.60	48.26
50	71.16	68.30	60.96
60	83.86	81.00	73.66
64	88.94	86.08	78.74

Accessories	X	Y
Long Latch	26.3	14.6
Short Latch	22.9	10.6



Series	Contacts	Mounting Type	Plating Options	Options
BHD	XX	XX	XX	XXX
Box header .100"x.100"	6, 8, 10, 12, 14, 16, 20, 24, 26, 30, 34, 40, 50, 60, 64	ST=Straight RA=Right angle RASM=Right angle surface mount	TN=Tin SGXX=Selective gold GDXX=Gold XX=Flash if blank; 05, 10, 30, 50µ"	[blank]=None SPL=Special pin length LLC=Long side latch SLC=Short side latch

RoHS compliant

Rev.	Description	Date	Approved	Drawing	Name	Date
				Approved	Howard	08/10/99
				Checked	Lizzy	08/10/99
				Drawn	Tina	08/10/99
				0.0 ± 0.35	0.00 ± 0.20	Angles ± 3'
				UNIT: mm		

Central Components Manufacturing
 440 Lincoln Blvd., Middlesex, New Jersey 08846
 Phone 732 469-5720 888 288-5152 Fax 732 469-1919

Part No.: **BHD-XX-ST-XX-XLC**

Description: Shrouded header with side latches