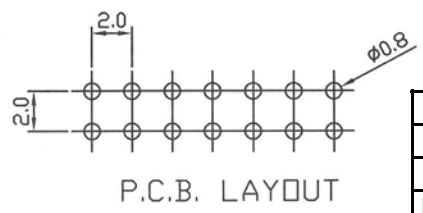
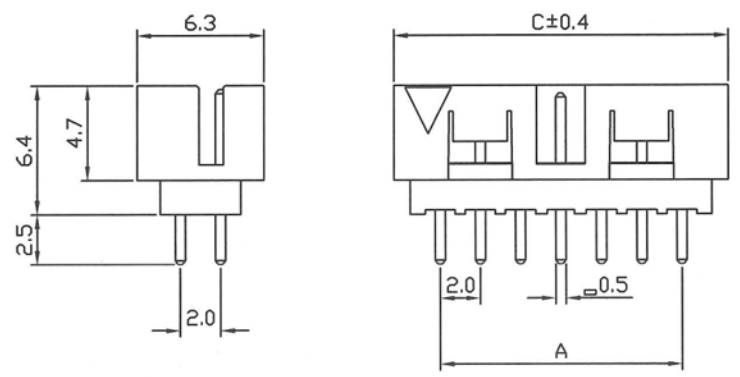


SPECIFICATIONS
 Contact Material: Brass
 Insulator Material: NY6T UL94V-0
 Contact Plating: Gold Over Nickel
 Contact Resistance: 20m ohms Max.
 Insulator Resistance: 1000M ohms Min
 Current Rating: 2 Amp
 Withstanding: AC 500V
 Operating Temp: -55C to +105C

Dimensions			
Poles	A	B	C
12	10.00	12.85	14.65
14	12.00	14.85	16.65
16	14.00	16.85	18.65
18	16.00	18.85	20.65
20	18.00	20.85	22.65
24	22.00	24.85	26.65
26	24.00	26.85	28.65
28	26.00	28.85	30.65
30	28.00	30.85	32.65
32	30.00	32.85	34.65
34	32.00	34.85	36.65
36	34.00	36.85	39.65
40	38.00	40.85	42.65
42	40.00	42.85	44.65
44	42.00	44.85	46.65
46	44.00	46.85	48.65
48	46.00	48.85	50.65
50	48.00	50.85	52.65



Ordering Information				
Series	Type	Positions	Style	Plating
BHD	C1	XX	ST	XX
Box Header	2.0mm Pitch	12-50 (see chart)	ST=Vertical	GD=Gold SG=Selective Gold

RoHS compliant

Rev.	Description	Date	Approved	Drawing	Name	Date
				Approved	Howard	04/07/08
				Checked	Lizzy	04/07/08
				Drawn	Tina	04/07/08
				0.0 ± 0.35	0.00 ± 0.20	Angles ± 3'
				UNIT: mm		

Central Components Manufacturing
 440 Lincoln Blvd., Middlesex, New Jersey 08846
 Phone 732 469-5720 888 288-5152 Fax 732 469-1919

Part No.: **BHD-C1-XX-ST-XX**

Description: Box Header 2.0mm Pitch