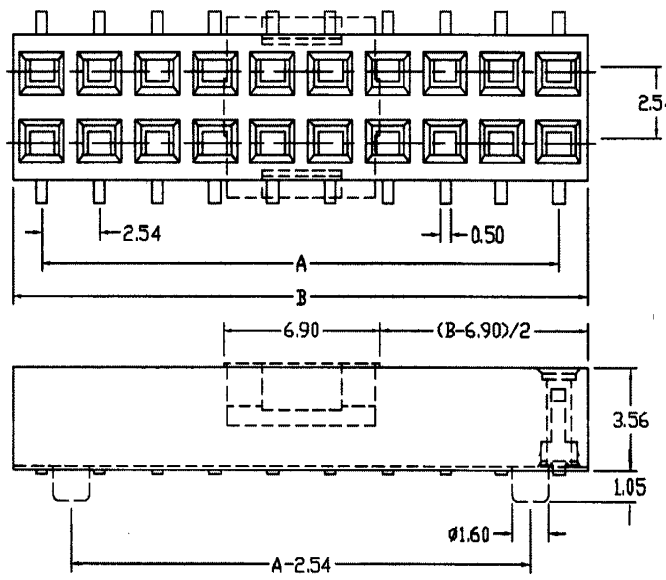
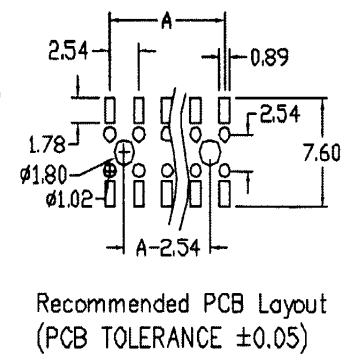


Dimensions					
Pos.	A	B	Pos.	A	B
8	7.62	10.16	46	55.88	58.42
10	10.16	12.70	48	58.42	60.96
12	12.70	15.24	50	60.96	63.50
14	15.24	17.78	52	63.50	66.04
16	17.78	20.32	54	66.04	68.58
18	20.32	22.86	56	68.58	71.12
20	22.86	25.40	58	71.12	73.66
22	25.40	27.94	60	73.66	76.20
24	27.94	30.48	62	76.20	78.74
26	30.48	33.02	64	78.74	81.28
28	33.02	35.58	66	81.28	83.82
30	35.58	38.10	68	83.82	86.36
32	38.10	40.64	70	86.36	88.90
34	40.64	43.18	72	88.90	91.44
36	43.18	45.72	74	91.44	93.98
38	45.72	48.26	76	93.98	96.52
40	48.26	50.80	78	96.52	99.06
42	50.80	53.34	80	99.06	101.6
44	53.34	55.88			



**SPECIFICATIONS**  
 Current rating: 3 amps  
 Contact material: Phosphor bronze  
 Contact resistance: 20 milliohms max.  
 Insulator material: High temp. thermoplastic, UL94V-0  
 Insulator resistance: 5,000 megohms min.  
 Withstanding: 500VAC for 1 min.  
 Operating temperature: -40°C to +105°C



Series	Rows	Height	Positions	Plating	Options
ARS	02	LPG	XX	XX	XX
Receptacle strip	02=dual row	LPG=3.71mm	8 to 80	GD=Gold flash GD30=30μ" gold GD10=10μ" gold SG=Duplex (10μ") GD15=15μ" gold TN=Tin	SM=Surface mount CP=Centering peg

RoHS compliant

Rev.	Description	Date	Approved	Drawing	Name	Date
				Approved	Howard	08/10/99
				Checked	Lizzy	08/10/99
				Drawn	Tina	08/10/99
				0.0 ± 0.35	0.00 ± 0.20	Angles ± 3'
				UNIT: mm		

**Central Components Manufacturing**  
 440 Lincoln Blvd., Middlesex, New Jersey 08846  
 Phone 732 469-5720 888 288-5152 Fax 732 469-1919

Part No.: **ARS-02-LPG-XX-XX-SM**

Description: Receptacle strip, surface mount, .100" pitch, 3.71mm profile, centering peg