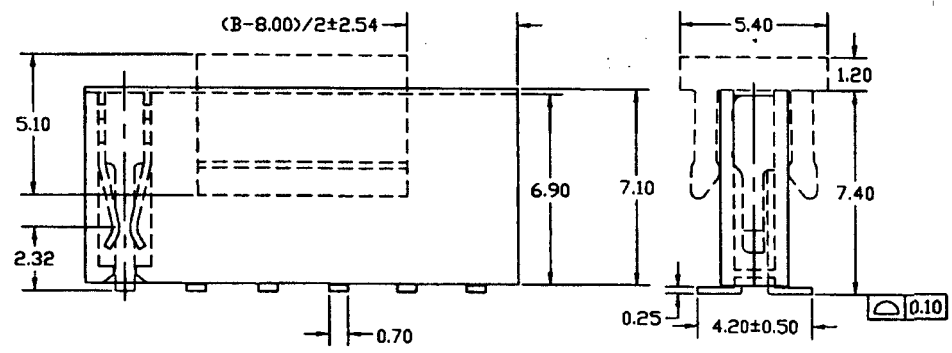
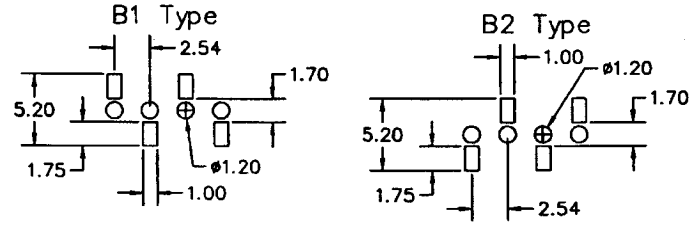
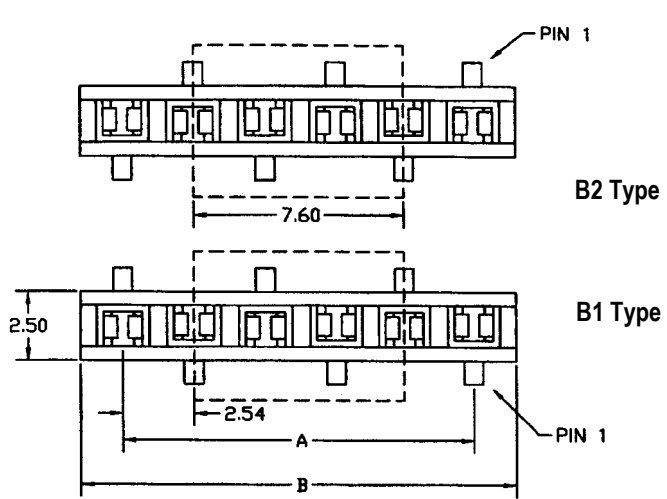


Recommended PC Board  
SMD Layout



- SPECIFICATIONS**
- Current rating: 3 amps
  - Contact material: Phosphor bronze
  - Contact plating: Tin, gold or duplex
  - Contact resistance: 20 milliohms max.
  - Insulator material: Nylon-6T, UL94V-0
  - Insulator resistance: 500 megohms min.
  - Withstanding: 1,000 VAC for 1 min.
  - Operating temperature: -40°C to +105°C

RoHS compliant

Rev.	Description	Date	Approved	Drawing	Name	Date
				Approved	Howard	08/10/99
				Checked	Lizzy	08/10/99
				Drawn	Tina	08/10/99
				0.0 ± 0.35	0.00 ± 0.20	Angles ± 3'
				UNIT: mm		

**Central Components Manufacturing**  
 440 Lincoln Blvd., Middlesex, New Jersey 08846  
 Phone 732 469-5720 888 288-5152 Fax 732 469-1919

Part No.: **ARS-01B2-04-GD-TR-PP**  
 Description: Header, single row, 4 position, SMD, female, .100" pitch, 7.4mm profile