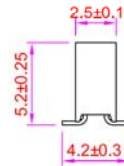
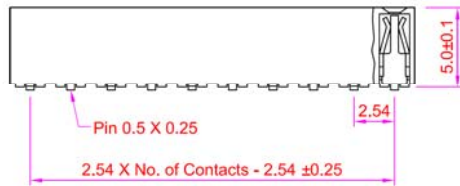
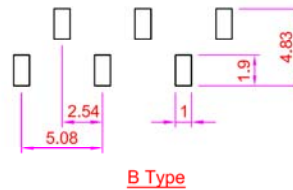
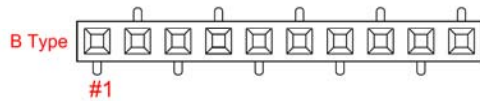
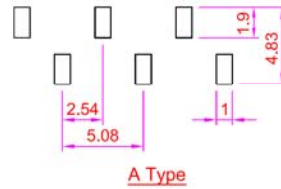
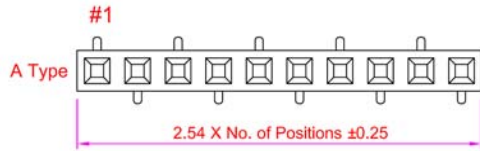


**Recommended  
P.C. Board SMD Layout**



**SPECIFICATIONS**

Current Rating:	3 Amps
Insulator Resistance:	1000 Megohms min.
Contact Resistance:	20m ohms max.
Contact Material:	Phosphor Bronze
Insulator Material:	Polyester, UL94V-0 Nylon 6T
Contact Plating:	Gold Flash (std)
Withstanding:	AC 600V
Operating Temp:	-40C ~ +105C

Series	Rows	Type	Contacts	Plating	Options	CAP	Packing
ARS	XX	XX	XX	XX	XX	XX	XX
Receptacle Strip	01=Single Row 02=Dual Row 03=Single Row r/a 04=Dural Row r/a	Blank=8.5mm Profile LPB=7.5mm Profile LP=5.2mm Profile LPE=3.7mm	Single Row=3-36 Dual Row=6-72	TN=Tin SGXX=Selective Gold GDXX=Gold XX=Flash if blank, 10,15,30u"	SM=Surface Mount P=Polarized CP=Centering Pin	PPT=Tape PPL=Plastic Cap PPM=Metal	Blank=Tube TR=Tape & Reel

**RoHS compliant**

Rev.	Description	Date	Approved	Drawing	Name	Date
				Approved	Howard	11/26/08
				Checked	Lizzy	11/26/08
				Drawn	Tina	11/26/08
				0.0 ± 0.35	0.00 ± 0.20	Angles ± 3'
					UNIT: mm	

**Central Components Manufacturing**  
 440 Lincoln Blvd., Middlesex, New Jersey 08846  
 Phone 732 469-5720 888 288-5152 Fax 732 469-1919

Part No.: **ARS-01-XX-LP-XX-SM-XX-XX**

Description: Female Header P2.54mm, Single Row SMD