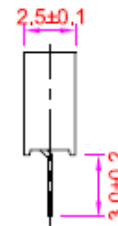
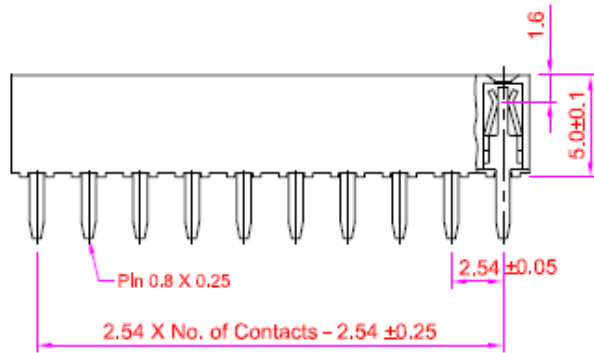


### Recommended P.C. Board Hole Layout



#### SPECIFICATIONS

Current Rating: 3 Amps  
 Insulator Resistance: 1000 Megohms min.  
 Contact Resistance: 20m ohms max.  
 Withstanding: AC 600V  
 Operating Temp: -40C ~ +105C  
 Contact Material: Phosphor Bronze  
 Insulator Material: Polyester, UL94V-0 Nylon 6T



Series	Rows	Profile	Positions	Plating
ARS	XX	XX	XX	XX
Receptacle Strip	01=Single 02=Dual	Blank=8.5mm LP=5.0mm	01-40	TN=Tin GDXX=Gold XX=Flash if Blank, 10,15,30u"

**RoHS compliant**

Rev.	Description	Date	Approved	Drawing	Name	Date
				Approved	Howard	07/01/10
				Checked	Lizzy	07/01/10
				Drawn	Tina	07/01/10
				0.0 ± 0.35	0.00 ± 0.20	Angles ± 3'
				UNIT: mm		

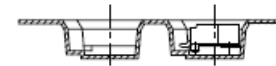
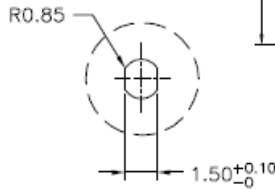
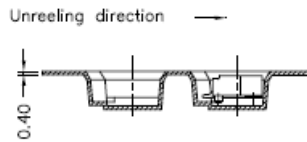
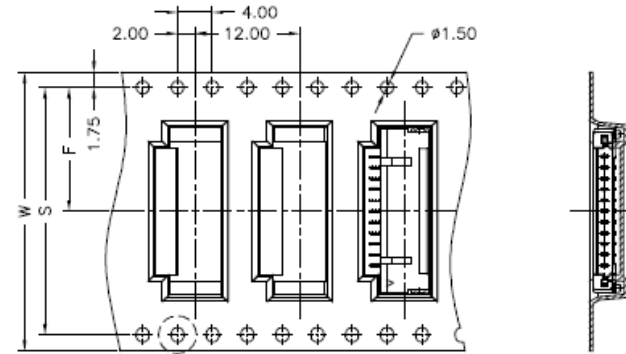
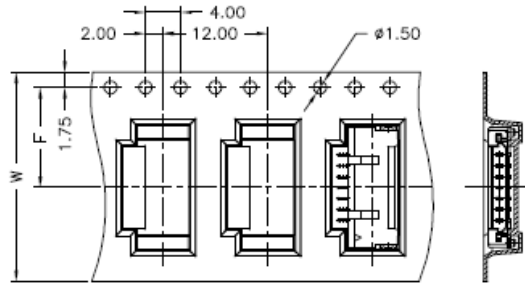
**Central Components Manufacturing**  
 440 Lincoln Blvd., Middlesex, New Jersey 08846  
 Phone 732 469-5720 888 288-5152 Fax 732 469-1919

Part No.: **ARS-01-LP-XX-XX**

Description: .100" Receptacle Strip, Single Row, 5.0mm Profile, Straight Type

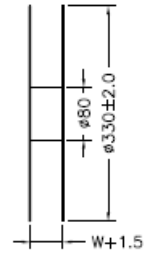
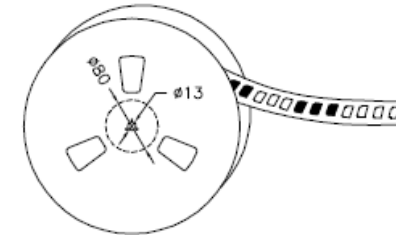
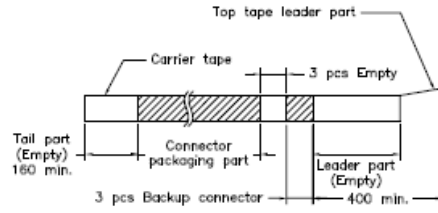
02~07 Contacts

08~30 Contacts



Dimensions

Contacts	W±.03	F±0.1	S±0.1
02	16	7.50	
03	24	7.50	
04	24	11.50	
05	24	11.50	
06	24	11.50	
07	24	11.50	
08	32	14.20	28.40
09	32	14.20	28.40
10	32	14.20	28.40
11	32	14.20	28.40
12	32	14.20	28.40
13	44	14.20	28.40
14	44	20.20	40.40
15	44	20.20	40.40
20	44	20.20	40.40
21	44	20.20	40.40
25	56	26.20	52.40
30	56	26.20	52.40



Rev.	Description	Date	Approved	Drawing	Name	Date
				Approved	Howard	07/01/10
				Checked	Lizzy	07/01/10
				Drawn	Tina	07/01/10
				0.0 ± 0.35	0.00 ± 0.20	Angles ± 3'
				UNIT: mm		

**Central Components Manufacturing**  
 440 Lincoln Blvd., Middlesex, New Jersey 08846  
 Phone 732 469-5720 888 288-5152 Fax 732 469-1919

Part No.: **ARS-01-LP-XX-XX**

Description: .100" Receptacle Strip, Single Row, 5.0mm Profile, Straight Type

