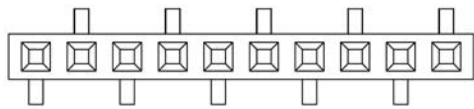
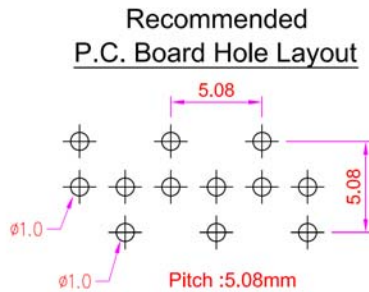
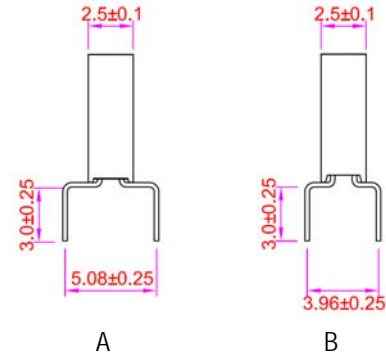
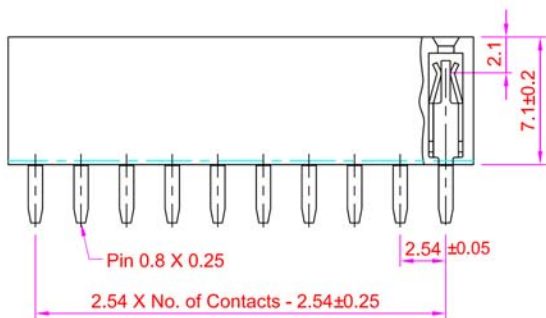
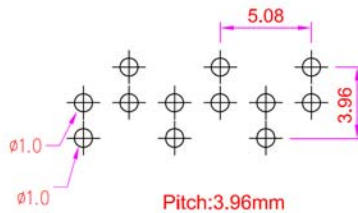


Type 1



Type 2



SPECIFICATIONS

Current Rating: 3 Amps
 Insulator Resistance: 1000 Megohms min.
 Contact Resistance: 20m ohms max.
 Withstanding: AC 600V
 Operating Temp: -40C ~ +105C
 Contact Material: Phosphor Bronze
 Insulator Material: Polyester, UL94V-0 Nylon 6T

Series	Rows	Profile	Contacts	Plating
ARS	01	BELPBXY	XX	XX
.100" Receptacle Strip	01=Single Row	Bottom Entry 7.1mm Profile X: 1=Type 1 (std) 2=Type 2 Y: A=5.08 Spread B=3.96 Spread	01-40	TN=Tin SGXX=Selective Gold GDXX=Gold XX=Flash if blank 10,15,30u"

RoHS compliant

Rev.	Description	Date	Approved	Drawing	Name	Date
				Approved	Howard	11/08/06
				Checked	Lizzy	11/08/06
				Drawn	Tina	11/08/06
				0.0 ± 0.35	0.00 ± 0.20	Angles ± 3'
				UNIT: mm		

Central Components Manufacturing
 440 Lincoln Blvd., Middlesex, New Jersey 08846
 Phone 732 469-5720 888 288-5152 Fax 732 469-1919

Part No.: **ARS-01-BELPBXY-XX-XX**

Description: Female Header Bottom Entry, Single Row