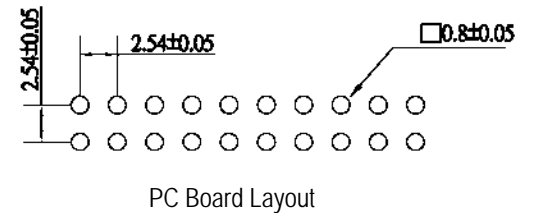
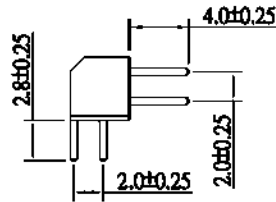
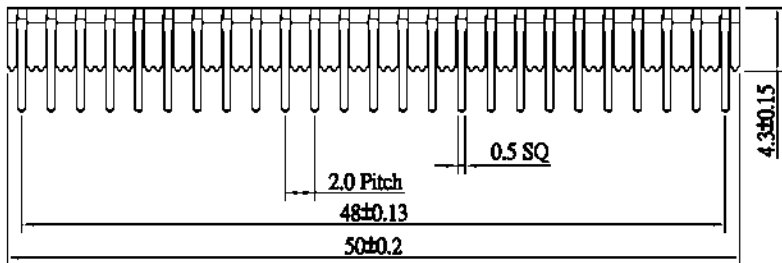
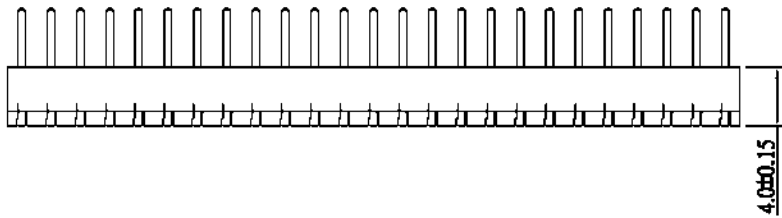
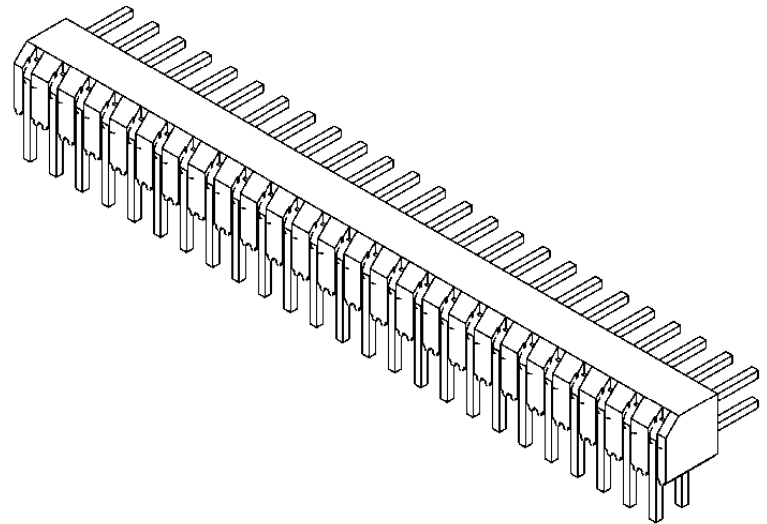


**SPECIFICATIONS**

Contact material: Brass  
 Insulator material: Glass filled PBS  
 Contact plating: Gold over nickel



Series	Rows	Profile	Style	Positions	Pins	Finish
BPH	2	HP	RA	XX	SD	XX
2mm pin header	2=2 rows	HP=4mm profile	RA=Right angle	4-80	SD=Standard	GD=Gold SG=Selective gold

**RoHS compliant**

Rev.	Description	Date	Approved	Drawing	Name	Date
				Approved	Howard	08/10/99
				Checked	Lizzy	08/10/99
				Drawn	Tina	08/10/99
				0.0 ± 0.35	0.00 ± 0.20	Angles ± 3'
				UNIT: mm		

**Central Components Manufacturing**  
 440 Lincoln Blvd., Middlesex, New Jersey 08846  
 Phone 732 469-5720 888 288-5152 Fax 732 469-1919

Part No.: **APH-2-HP-RA-XX-SD-XX**

Description: Pin header, high profile (4.0mm), right angle