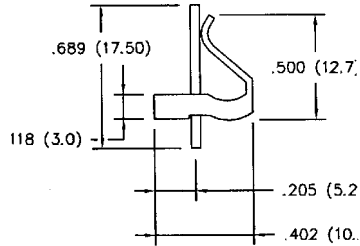
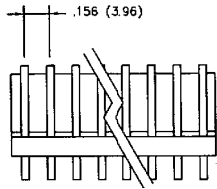
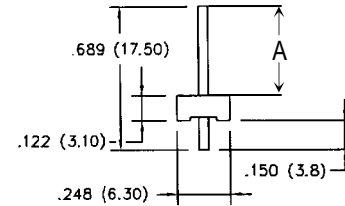
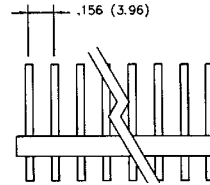


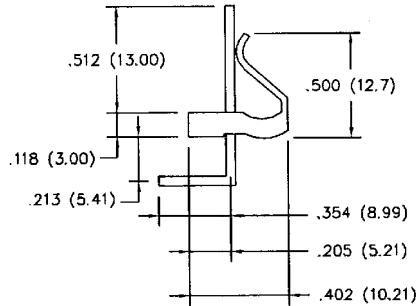
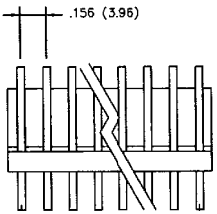
Straight With Polarization Lock



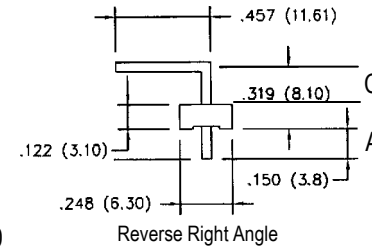
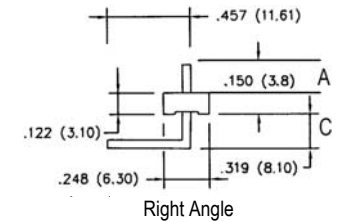
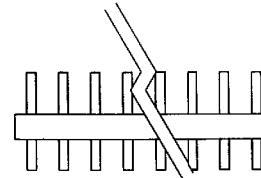
Straight Without Polarization Lock



Right Angle With Polarization Lock



Right Angle Without Polarization Lock



SPECIFICATIONS

- Current rating: 7 amps max.
- Operating voltage: 250VAC
- Contact material: Brass
- Contact plating: Tin over copper
- Contact resistance: 20 milliohms min.
- Insulator material: Nylon 66, UL94V-0
- Insulator resistance: 5,000 megohms min.
- Withstanding: 1,500 RMS/1 min.
- Durability: 1,000 cycles min.
- Operating temperature: -25°C to 85°C.

RoHS compliant

Series	Positions	Mounting	Polarization	Dimensions	Plating
PHD	XX	XX	XX	CSL(A/C/E)	TN
.156 power header	2-20 positions	ST=Straight RA=Right angle RRA=Reverse Right Angle	PL=Polarization lock WP=No polarization	Blank=Standard A=Tail C=Rise E=Total pin length	TN=Tin

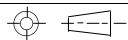
Rev.	Description	Date	Approved	Drawing	Name	Date
A	PNT	5/21/08	Greg	Approved	Howard	8/10/99
				Checked	Lizzy	8/10/99
				Drawn	Tina	8/10/99

Central Components Manufacturing
 440 Lincoln Blvd., Middlesex, New Jersey 08846
 Phone 732 469-5720 888 288-5152 Fax 732 469-1919

Part No.: **PHD-XX-XX-XX-TN**

Description: power header, .156 pitch

0.0 ± 0.35 0.00 ± 0.20 Angles ± 3'



UNIT: mm