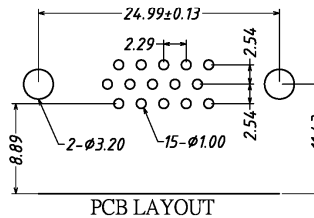
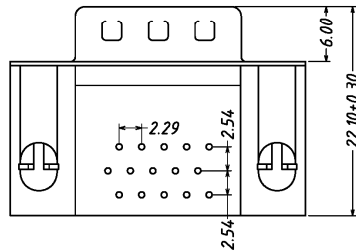
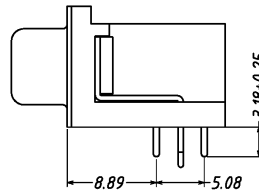
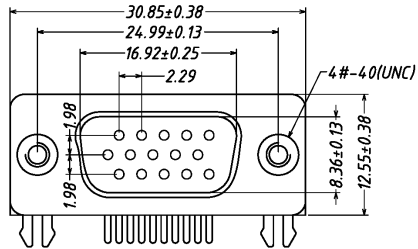


| Dimensions (mm) | | | |
|-----------------|-------|-------|-------|
| Pos. | A | B | C |
| 15 | 16.92 | 24.99 | 30.81 |
| 26 | 25.25 | 33.32 | 39.14 |
| 44 | 38.96 | 47.04 | 53.04 |
| 62 | 55.42 | 63.50 | 69.32 |
| 78 | 52.81 | 61.11 | 66.93 |



SPECIFICATIONS

- Operating voltage: 600VDC max.
- Current rating: 5 amps max.
- Contact material: Phosphor bronze, stamped and formed
- Contact resistance: 8 milliohms max.
- Plating, contact area: 5μ" gold (30μ" optional) MIL-G-45204 type 2 grade C over 50μ" nickel QQ-N-290 class 2 grade C
- Plating, solder tails: Gold flash
- Shell material: Steel, tin or chromate plated
- Insulator material: PBT, glass reinforced UL94V-0
- Insulation resistance: 5,000 megohms min.
- Dielectric withstanding: 1,000VAC for 1 min. RMS
- Cycle life: 500 cycles min.
- Insertion force: 10 oz. max. (.041" pin)
- Withdrawal force: 7.1 oz. min. (.039" pin)
- Operating temperature: -55°C to 125°C

| Series | Type | Mounting and Face Options | Options |
|---|----------------------|--|--|
| HDSXX | XX | XXX | XX |
| High-density D-sub, right-angle PCB mount XX=Positions 15, 26, 44, 62, 78 | MR=Male FR=Female | FJB=Fixed jackscrews #4-40 with forked boardlocks TIB=Threaded inserts with forked boardlocks TJB=Threaded inserts with removable jackscrews #4-40 and forked boardlocks TSS=Top ground straps with screw holes, without boardlocks | [blank]=None FF=Ferrite filter 30GD=30μ" gold plate 4P=4-prong boardlocks |

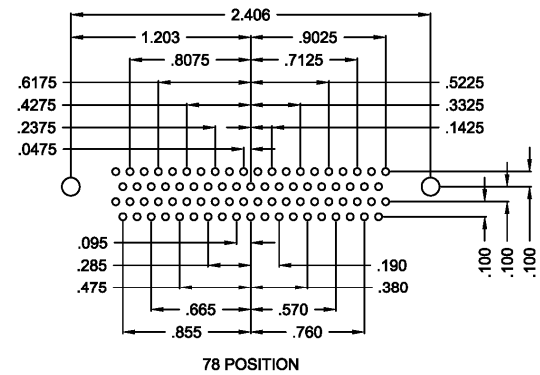
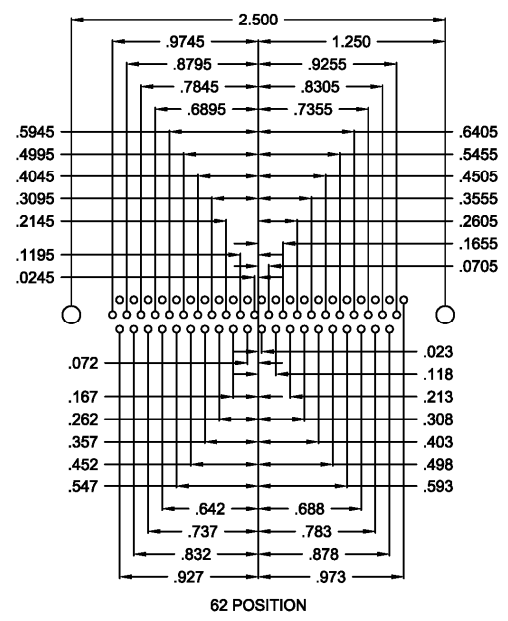
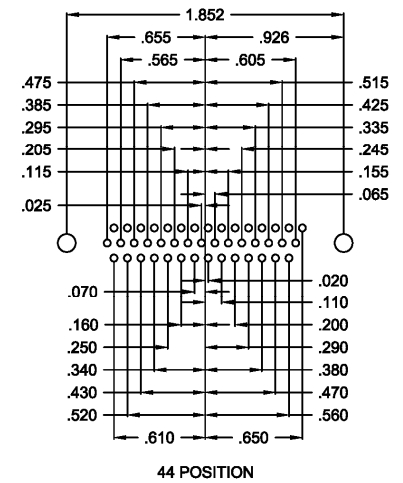
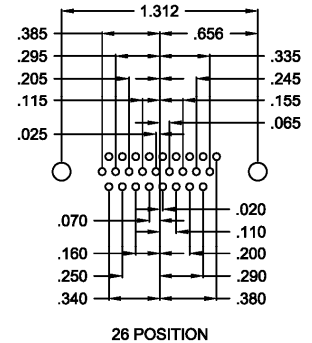
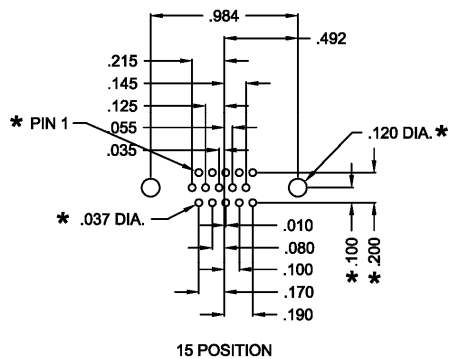
RoHS compliant

| Rev. | Description | Date | Approved | Drawing | Name | Date |
|------|-------------|------|----------|------------|-------------|-------------|
| | | | | Approved | Howard | 08/10/99 |
| | | | | Checked | Lizzy | 08/10/99 |
| | | | | Drawn | Tina | 08/10/99 |
| | | | | 0.0 ± 0.35 | 0.00 ± 0.20 | Angles ± 3' |
| | | | | UNIT: mm | | |

Central Components Manufacturing
 440 Lincoln Blvd., Middlesex, New Jersey 08846
 Phone 732 469-5720 888 288-5152 Fax 732 469-1919

Part No.: **HDSXX-MR-TIB**

Description: High-density D-subminiature connector, male, right angle, PCB mount, threaded inserts with forked boardlocks



| Rev. | Description | Date | Approved | Drawing | Name | Date |
|------|-------------|------|----------|------------|-------------|---|
| | | | | Approved | Howard | 08/10/99 |
| | | | | Checked | Lizzy | 08/10/99 |
| | | | | Drawn | Tina | 08/10/99 |
| | | | | 0.0 ± 0.35 | 0.00 ± 0.20 | Angles ± 3' |
| | | | | | UNIT: mm | |
| | | | | | | Central Components Manufacturing 440 Lincoln Blvd., Middlesex, New Jersey 08846 Phone 732 469-5720 888 288-5152 Fax 732 469-1919 |
| | | | | | | Part No.: HDSXX-MR-TIB |
| | | | | | | Description: High-density D-subminiature connector, male, right angle, PCB mount, threaded inserts with forked boardlocks |

