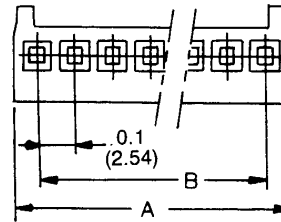
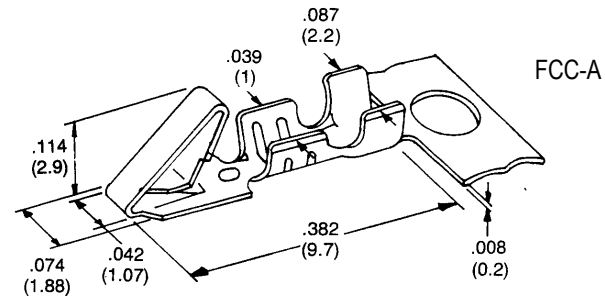
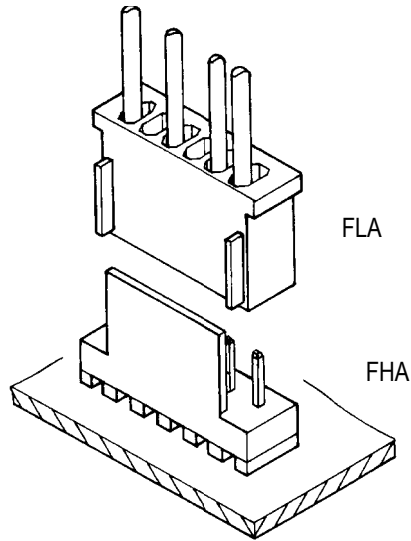
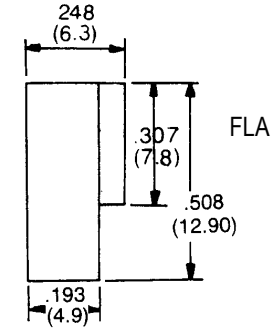
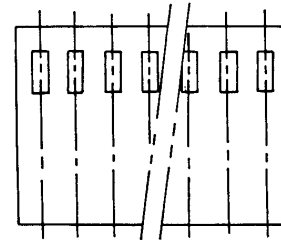


SPECIFICATIONS

Voltage rating: 250VAC
 Current rating: 3 amps max.
 Contact material: Phosphor bronze
 Contact plating: Bright tin over copper
 Contact resistance: 10 milliohm max.
 Insulator material: Glass filled Nylon 66, UL94V-0
 Insulation resistance: 5,000 megohms min.
 Withstanding: 1,000 VAC for 1 min.
 Operating Temp: -55°C to 125°C



A=No. pos. X .100 + .026
 B=No. pos.- 1 X .100



Series	Options
FCC-A	XX
Crimp Contact	RL=5k Reel BG=1k Bag

Series	Positions	Options
FLA	XX	XX
.100" pitch friction lock housing	02-20 positions	[blank]=With locking ramp NL=No locking ramp

RoHS compliant

Rev.	Description	Date	Approved	Drawing	Name	Date
A	PN	5-2-08	Greg	Approved	Howard	08/10/99
B	PNT	6-22-09	Greg	Checked	Lizzy	08/10/99
				Drawn	Tina	08/10/99
				0.0 ± 0.35	0.00 ± 0.20	Angles ± 3'
				UNIT: mm		

Central Components Manufacturing
 440 Lincoln Blvd., Middlesex, New Jersey 08846
 Phone 732 469-5720 888 288-5152 Fax 732 469-1919

Part No.: **FLA-XX-NL/FCC-A**

Description: Friction lock housing and contact