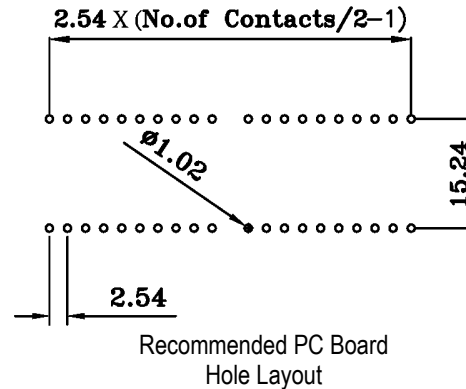
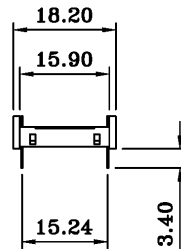
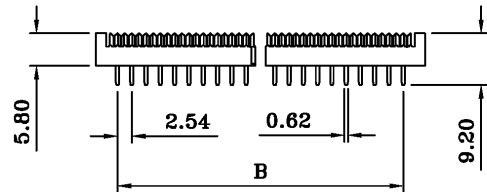
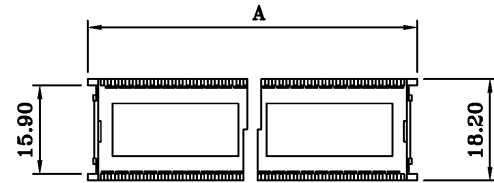
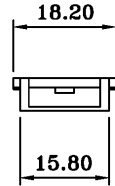
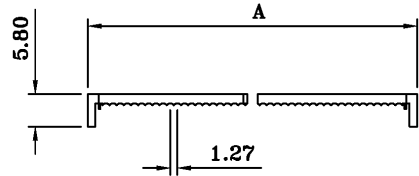
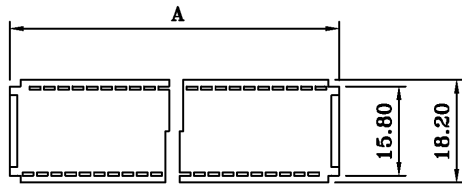


SPECIFICATIONS

Current rating: 1 amp
 Contact material: Phosphor bronze (std) or brass
 Contact plating: Tin, gold or selective gold
 Insulator material: PBT +30% glass fiber, UL94V-0, black (std)
 Insulation resistance: 1,000 megohms min.
 Operating temperature: -45°C to +85°C



Dimensions		
Pos.	A	B
24	35.88	27.94
28	40.96	33.02
32	46.04	38.10
36	51.12	43.18
40	56.20	48.26

Series	Contacts	Plating	Options
FCD-B	XX	XX	XX
Ribbon cable DIP plug, .100"x.600" (See also FCD, .100"x.300")	24, 28, 32, 36, 40	TN=Tin SGXX=Selective gold GDXX=Gold XX=Flash if blank; 3, 5, 15, 30µ" gold	[blank]=None RD=Red GY=Gray B=Brass pin BL=Blue WT=White YE=Yellow GN=Green OR=Orange

RoHS compliant

Rev.	Description	Date	Approved	Drawing	Name	Date
				Approved	Howard	06/13/07
				Checked	Lizzy	06/13/07
				Drawn	Tina	06/13/07
				0.0 ± 0.35	0.00 ± 0.20	Angles ± 3'
				UNIT: mm		

Central Components Manufacturing
 440 Lincoln Blvd., Middlesex, New Jersey 08846
 Phone 732 469-5720 888 288-5152 Fax 732 469-1919

Part No.: **FCD-B-XX-XX-XX**

Description: Ribbon cable DIP plug, .100" x .600"