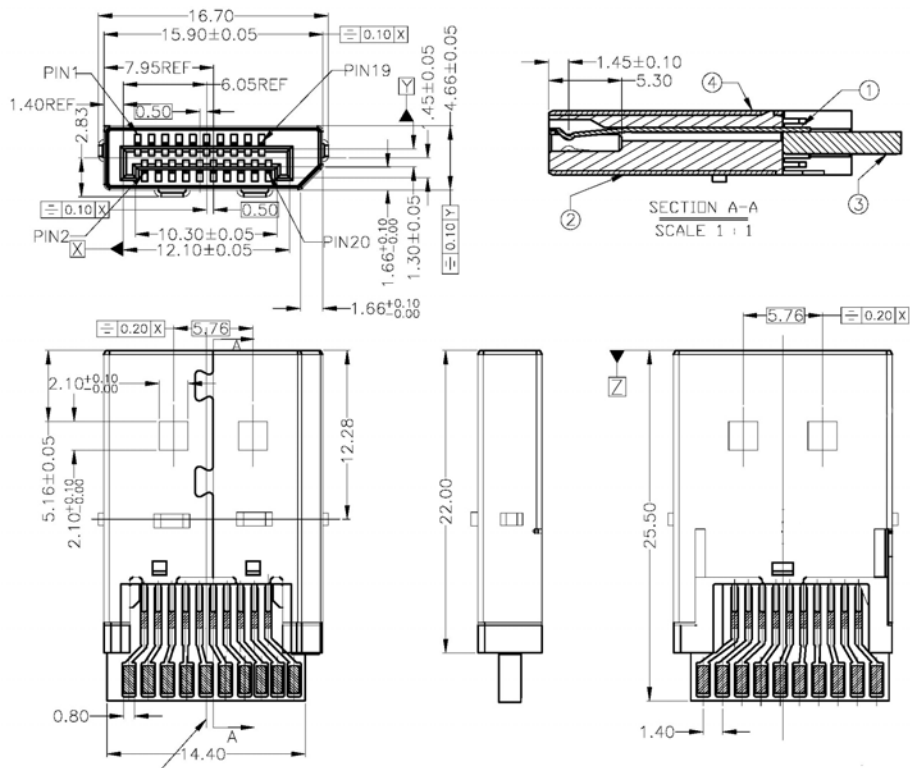


RoHS compliant

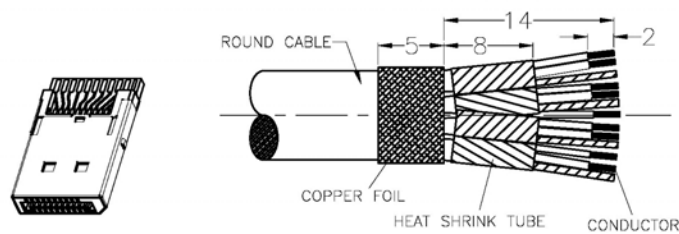
Item	Name	Material	Note
1	Contact	Copper Alloy	Nickel over all, Contact Area Plated over Gold, Solder Area Plated over Tin
2	Shell	Copper Alloy	Copper over Nickel
3	PCB	FR-4	
4	Housing	Thermoplastic	UL94V-0

Series	Type	Shell Type	Shell Material
DPC	S162S	X	X
Display Port Connector	20 Pin Plug, Molding Type	Blank=No Latch Hole L=With Latch Hole	B=Brass S=SPCC

Shell Plating	Tail Style	Color	Contact Plating	Options
XX	S	BK	GDXX	XX
GD=Gold Flash Over Nickel G3=3u" Gold Plating over Nickel N=Nickel Plated	S=Solder Type	BK=Black	XX=Flash if Blank 15=15u" Gold over Nickel 30=30u" Gold over Nickel	Blank=None P=With PCB H=With Hood PH=With PCB & Hood



CABLE TREATMENT:



Rev.	Description	Date	Approved	Drawing	Name	Date
				Approved	Howard	05/19/08
				Checked	Lizzy	05/19/08
				Drawn	Tina	05/19/08
				0.0 ± 0.35	0.00 ± 0.20	Angles ± 3°
				UNIT: mm		

**Central Components Manufacturing**  
 440 Lincoln Blvd., Middlesex, New Jersey 08846  
 Phone 732 469-5720 888 288-5152 Fax 732 469-1919

Part No.: **DPC-S162S-X-X-XX-S-BK-GDXX-XX**

Description: Displayport 20 Pin Plug Molding Type