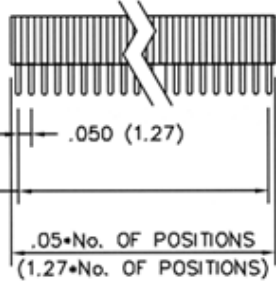
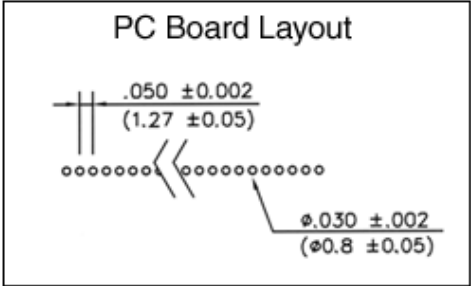
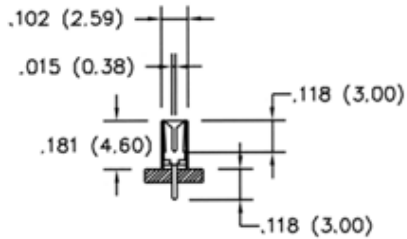


# Single Row



$$\frac{.05 \cdot \text{No. OF POSITIONS} - .05}{(1.27 \cdot \text{No. OF POSITIONS} - 1.27)}$$

$$\frac{.05 \cdot \text{No. OF POSITIONS}}{(1.27 \cdot \text{No. OF POSITIONS})}$$



## SPECIFICATIONS

- Insulator: PBT glass reinforced UL94V-0 rated
- Contacts: Phosphor bronze
- Contact plating: Gold over nickel (GD)  
Optional gold over nickel in contact area  
Tin plate on solder tail area (SG)  
Optional bright tin over copper (TN)
- Operating voltage: 250 VAC max.
- Current rating: 1 amps max.
- Contact resistance: 10 milliohms max.
- Insulation resistance: 1,000 megohms min.
- Dielectric withstanding: 1,000VAC for 1 min.
- Cycle Life: 250 insertion/separation cycles min.
- Operating Temperature: -55°C to +125°C

Series	Rows	Style/Profile	Tail	Positions	Plating	Options
CRS	0X	XX	XX	XX	XX	XX
.050 pitch Receptacle Strip	01=Single St 02=Dual St 03=Single RA 04=Dual RA 05=Triple St 06=Triple RA 07=Quad St 08=Quad RA	XX=Profile Code SEX=Side Entry BEX=Bottom Entry For single row BE even pins add 1 for rt first, 2 for lft first	Spacing: [Blank]=5.08mm N=3.81mm W=7.62mm Length: [Blank]=Std. S=Short L=Long	02-40 (01) 04-80 (02)	TN=Tin SGXX=Selective Gold GDXX=Gold XX=Flash if blank, 3,5,10,15u"	SM=Surface Mount PPL=Pick & Place Cap PPT=Pick & Place Tape TR=Tape & Reel TB=Tube

**RoHS compliant**

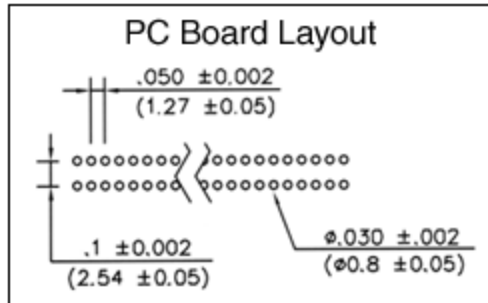
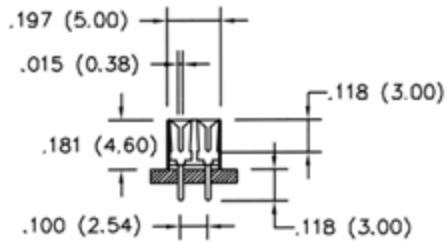
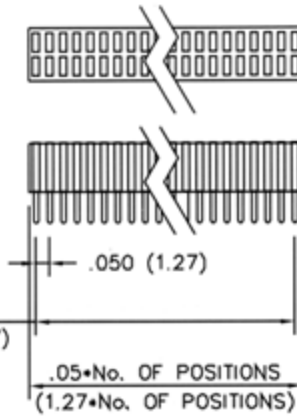
Rev.	Description	Date	Approved	Drawing	Name	Date
				Approved	Howard	09/15/09
				Checked	Lizzy	09/15/09
				Drawn	Tina	09/15/09
				0.0 ± 0.35	0.00 ± 0.20	Angles ± 3'
				UNIT: mm		

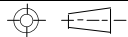
**Central Components Manufacturing**  
 440 Lincoln Blvd., Middlesex, New Jersey 08846  
 Phone 732 469-5720 888 288-5152 Fax 732 469-1919

Part No.: **CRS-XX-XX-XX-XX-XX-XX**

Description: .050" (1.27mm) Pitch Top Entry Receptacle Strips

# Double Row



Rev.	Description	Date	Approved	Drawing	Name	Date
				Approved	Howard	09/15/09
				Checked	Lizzy	09/15/09
				Drawn	Tina	09/15/09
				0.0 ± 0.35	0.00 ± 0.20	Angles ± 3'
				 UNIT: mm		


**Central Components Manufacturing**  
 440 Lincoln Blvd., Middlesex, New Jersey 08846  
 Phone 732 469-5720 888 288-5152 Fax 732 469-1919

Part No.: **CRS-XX-XX-XX-XX-XX-XX**

Description: .050" (1.27mm) Pitch Top Entry Receptacle Strips