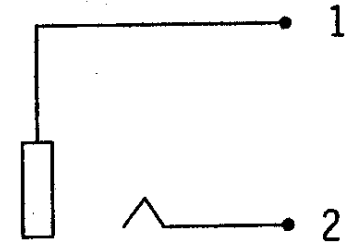
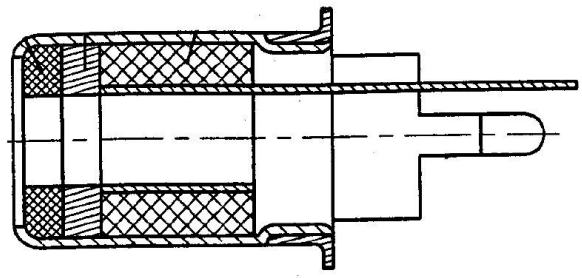


SPECIFICATIONS

- Shell material: Steel
- Terminal material: Brass
- Bushing material: Steel
- Contact resistance: 30 milliohms max.
- Insulation resistance: 100 megohms min.
- Withstanding: 500 VAC/1 min.
- Insertion force: 3 Kgf max.
- Extraction force: 0.08 Kgf min.



Series	Style	Bushing Finish	Terminal Finish	Shell Finish	Insulator Color	Options
CPRJ	SCP606	X	X	X	XX	XX
RCA jack	Straight thru-hole	Blank=Nickel (std) G=Gold	Blank=Nickel (std) G=Gold T=Tin	Blank=Tin (std) G=Gold	BK=Black GR=Green BN=Brown BL=Blue RD=Red VI=Violet OR=Orange GY=Gray YL=Yellow WT=White	Blank=None GP=Grounding Plate

RoHS compliant

Rev.	Description	Date	Approved	Drawing	Name	Date
A	PNT	1/21/13	Greg	Approved	Howard	08/10/99
				Checked	Lizzy	08/10/99
				Drawn	Tina	08/10/99
				0.0 ± 0.35	0.00 ± 0.20	Angles ± 3'
				UNIT: mm		

Central Components Manufacturing
 440 Lincoln Blvd., Middlesex, New Jersey 08846
 Phone 732 469-5720 888 288-5152 Fax 732 469-1919

Part No.: **CPRJ-SCP606-WT**

Description: RCA jack, straight, thru-hole PCB mount